

# Miller LiveArc Software Upgrade Instructions

---



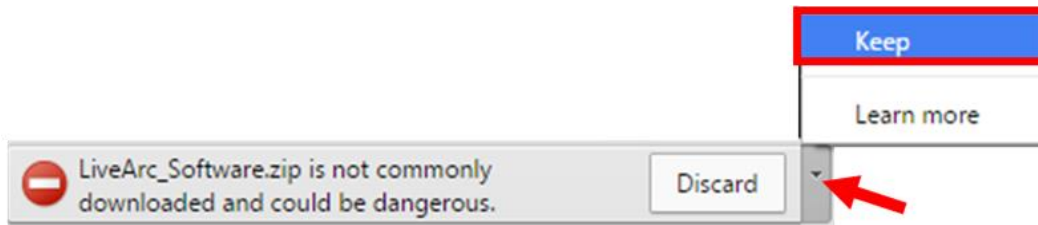
## Contents

Instructions for Upgrading LiveArc Software.....	2
Instructions for Enabling Additional Language Options in LiveArc Software .....	8

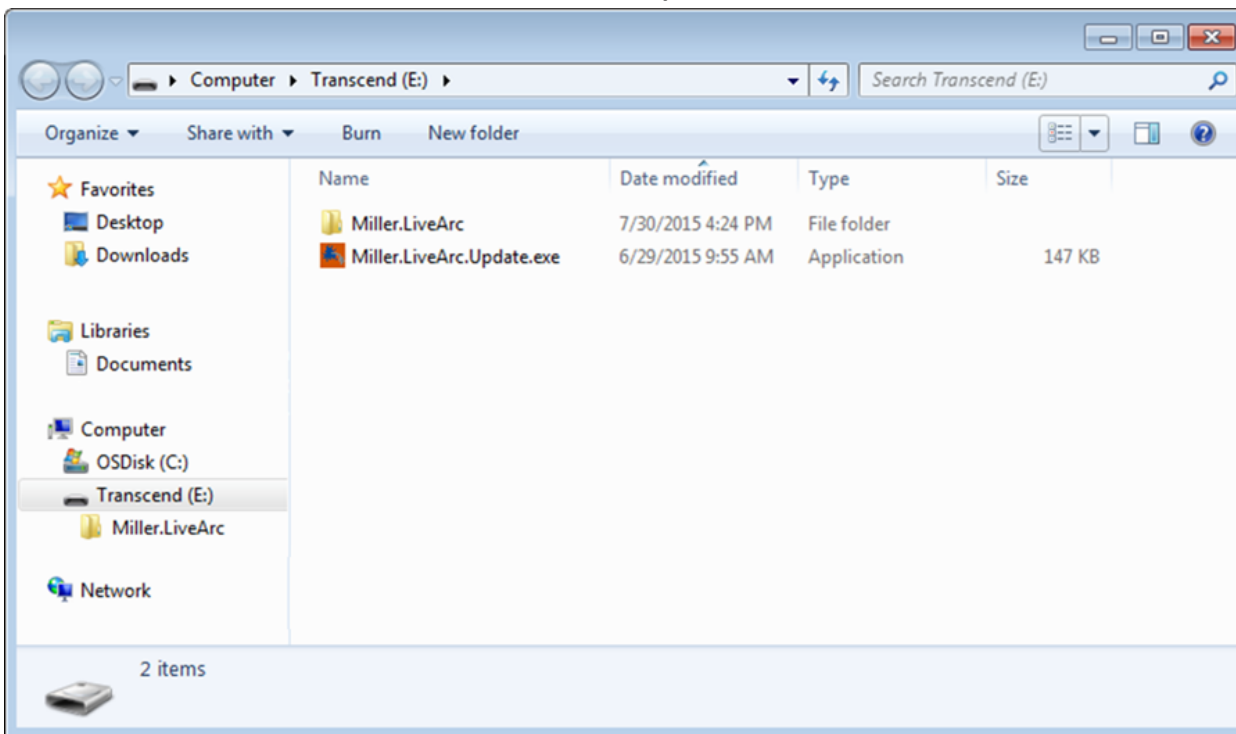
## Instructions for Upgrading LiveArc Software

Use a web browser (*Google Chrome is recommended*) to download the latest software update file (**LiveArc\_Software.zip**) from this location: <http://www.millerwelds.com/LiveArcSoftware> (on the website, click on [Download Latest Software Update >>](#))

After the download completes, if you see any warning messages like this, then select the arrow tab and then select “Keep”.



Use a file unzipping utility (i.e. WinZip) to unzip and extract the contents to a USB drive. The USB drive will then contain 2 items – a **Miller.LiveArc** folder and a **Miller.LiveArc.Update.exe** file.



Plug the USB drive into the LiveArc USB port.



Login as an instructor. Unless it has been changed, the default login is:

- User Name: admin
- Password: admin

## Select System Admin

Assignment Selection | WPS Review | Setup | Joint Calibration | Weld Test | Admin, Admin

Filters Show Hide

**Process**  
GMAW GMAW-S FCAW-G

**Joint Type**  
Butt Joint Lap Joint T Joint

**Position**  
Flat Horizontal Vertical Overhead

NAME	PROCESS	JOINT TYPE	WELD TYPE	POSITION	BASE METAL / THICKNESS	HISTORY
1/8T-2F(D)-GMAWS-1	GMAW-S	T	Fillet	Horizontal	1/8 inch	
1/8T-2F(P)-GMAWS-1	GMAW-S	T	Fillet	Horizontal	1/8 inch	
1/8Lap-2F(D)-GMAWS-1	GMAW-S	Lap	Fillet	Horizontal	1/8 inch	
1/8Lap-2F(P)-GMAWS-1	GMAW-S	Lap	Fillet	Horizontal	1/8 inch	
1/8Butt-1G(P)-GMAWS-1	GMAW-S	Butt	Square Groove	Flat	1/8 inch	
3/16T-2F(D)-GMAWS-1	GMAW-S	T	Fillet	Horizontal	3/16 inch	

Viewing 1-6 of 18

Touch to View More Assignments

**ACTIONS**

- System Admin
- Assignment Mgmt
- User Management
- Dashboard

Miller

## Select Software Updates

Home | System Admin | Admin, Admin

Check for software updates at [www.millorwelds.com/LiveArcSoftware](http://www.millorwelds.com/LiveArcSoftware)

2.1

To install a software update, download the latest software version online. **Install software updates.**

The LiveArc™ software available online can be installed on instructor computers\* After generating the ownership authentication file on a USB drive, insert the USB drive into the instructor computer and start the LiveArc™ software to permanently unlock the software on the computer. **Generate ownership authentication file on USB drive**

\*Min. requirements: Windows 7 or 8, 4GB of RAM, .NET Framework 4.5 installed. Must have at least 1GB of free hard drive space to install, but up to 12GB may be required to transfer data to and from the LiveArc system, depending on the amount of assignment test history stored.

If you experienced a recent software error, download the debug file for evaluation by Miller technical support. **Save debug file**

MAC address: 00-0B-AB-71-14-E5 | PCB Version: 2 | Firmware Version: 21977 | Build Version: 5596.24473

**ACTIONS**

- Home
- Exit Application
- Restart Application
- Extend Display
- Shut Down

Miller

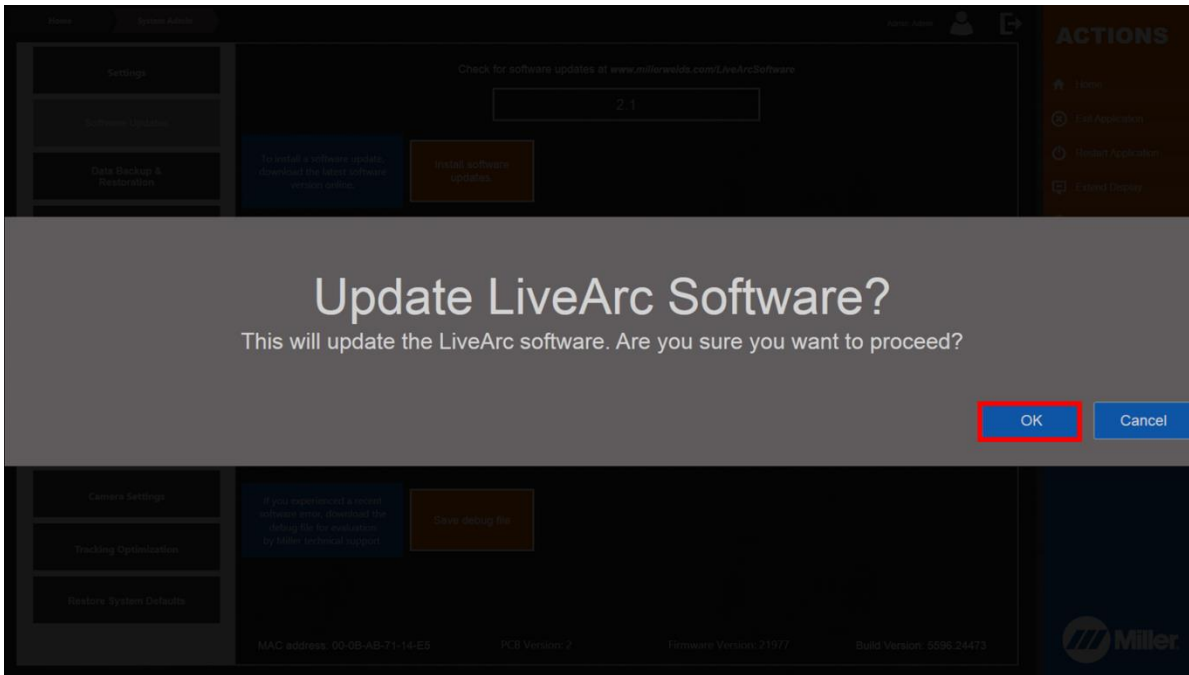
## Select Install software updates

The screenshot shows the Miller software update interface. On the left is a navigation menu with options like Settings, Software Updates, Data Backup & Restoration, Gun Calibration, Joint Calibration Tool, Table Calibration, Camera-to-Arms Linkage Adjustment, Clamp Calibration, Camera Settings, Tracking Optimization, and Restore System Defaults. The main area displays a version number '2.1' and instructions for installing updates, generating ownership authentication files, and saving debug files. The 'Install software updates' button is highlighted in red. The right sidebar contains an 'ACTIONS' menu with options like Home, Exit Application, Restart Application, Extend Display, and Shut Down. The bottom status bar shows MAC address, PCB Version, Firmware Version, and Build Version.

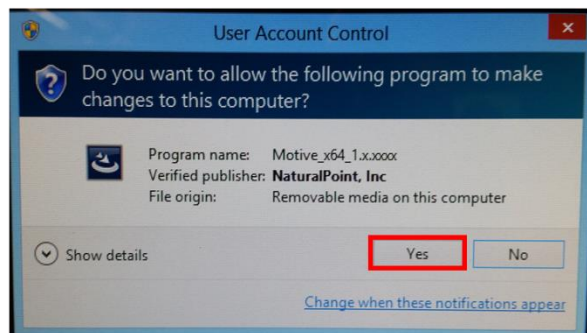
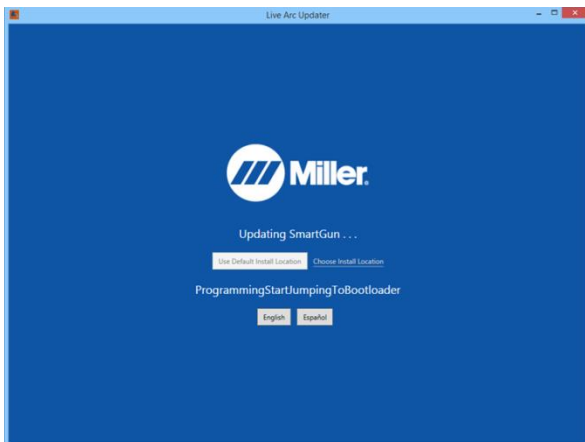
A folder browsing window will pop up with the USB drive selected by default. Select **OK**.

This screenshot is identical to the previous one, but with a 'Browse For Folder' dialog box open in the center. The dialog box shows a file explorer view with 'USB Transcend (D:)' selected. The 'OK' button at the bottom of the dialog box is highlighted in red. The rest of the interface, including the navigation menu, main instructions, and right sidebar, remains the same.

The confirmation message will appear. Select **OK**.



The LiveArc software will close automatically and a software update window will appear. Do not click anything on this window. Various messages will appear about the components being updated. The process may take 1-2 minutes. If prompted for a Yes/No response, select **Yes**.



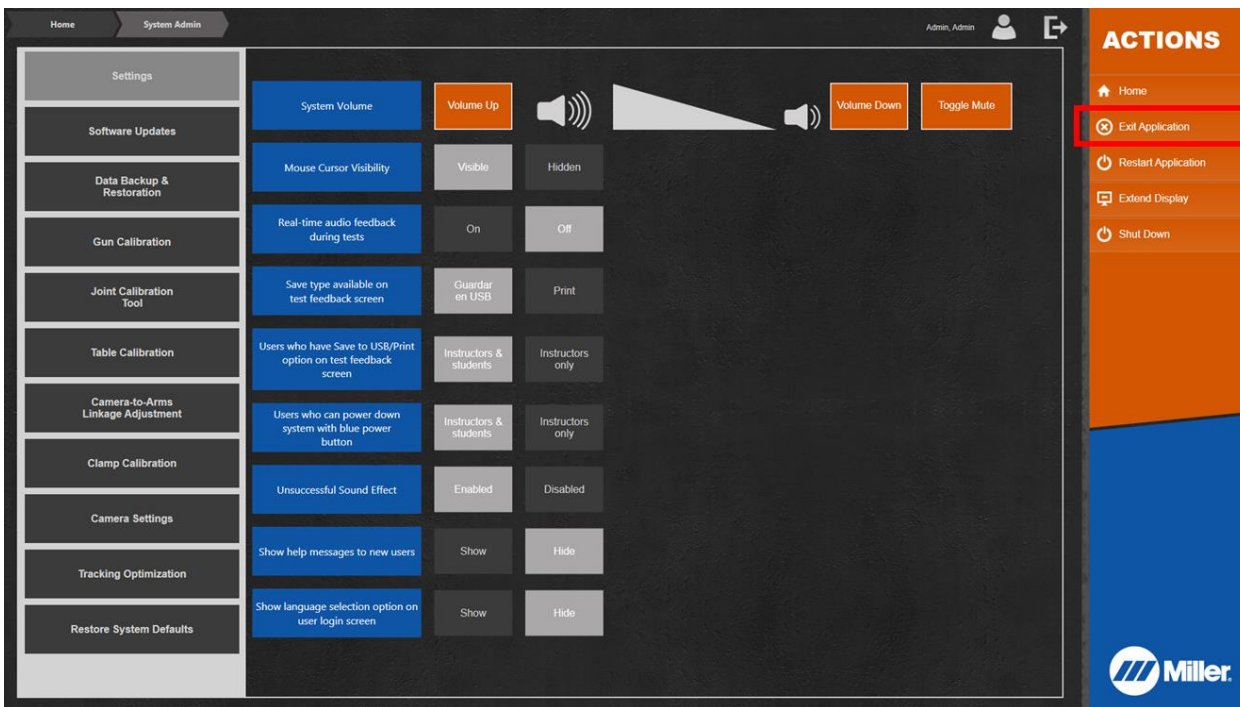
After the update process is completed, the LiveArc software will automatically restart. If you login as an instructor, go to **System Admin**, and then select **Software Updates**, you should now see the version number at the top corresponds to the version you just installed.



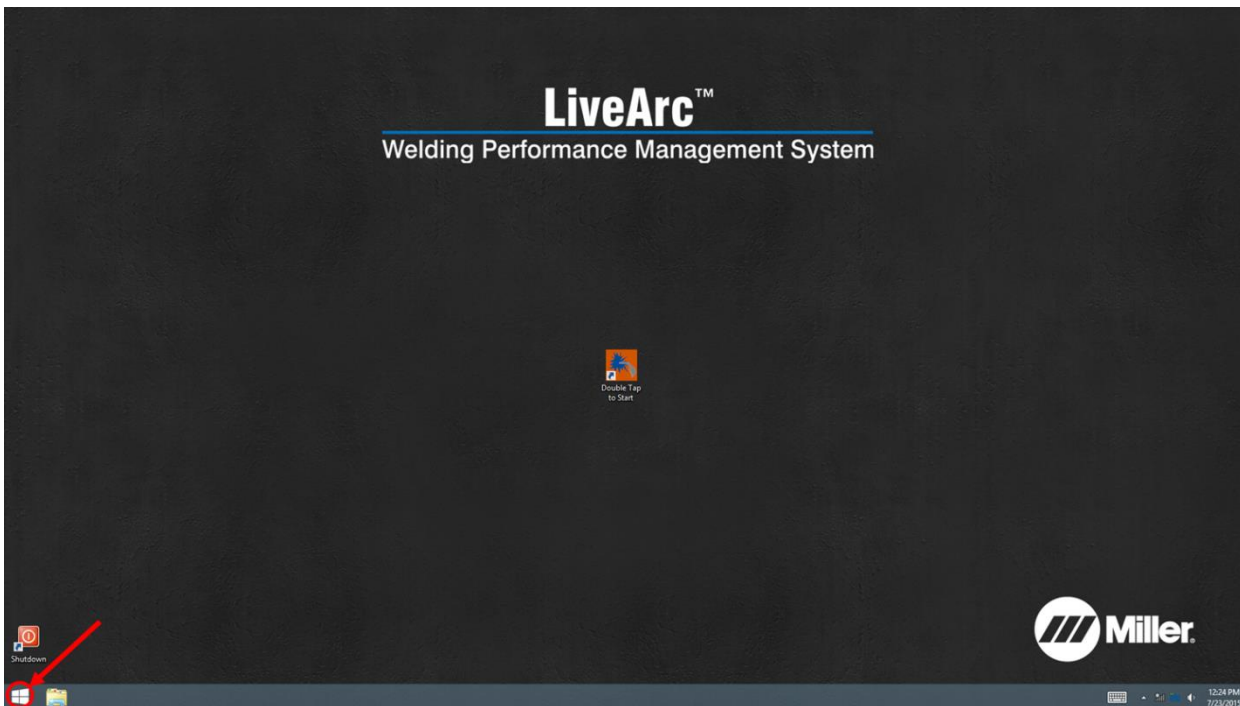
If you want to enable additional language options (i.e. Spanish) on the LiveArc system, you will have to follow the procedure on the following pages. Once this procedure has been performed following the first software update, it does not have to be done again for future software updates.

# Instructions for Enabling Additional Language Options in LiveArc Software

Go to *System Admin* and select **Exit Application**. Then select **Ok** to confirm.

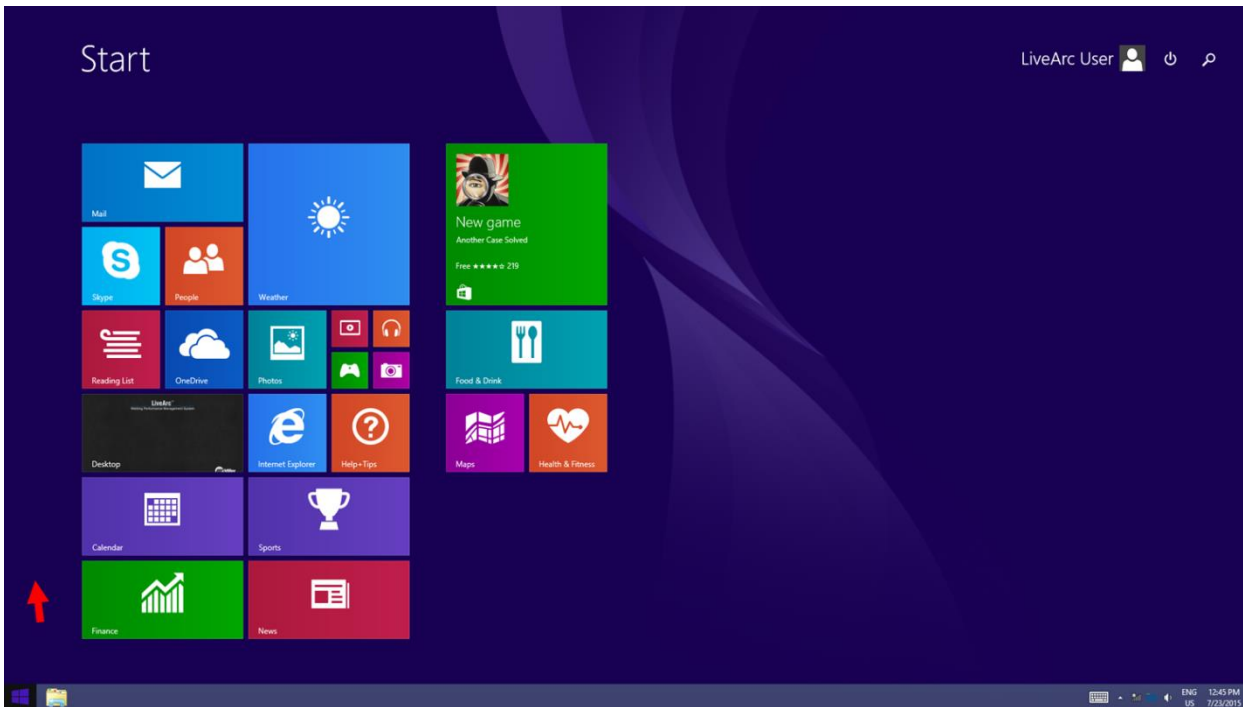


In the bottom left corner, double tap the Windows icon.

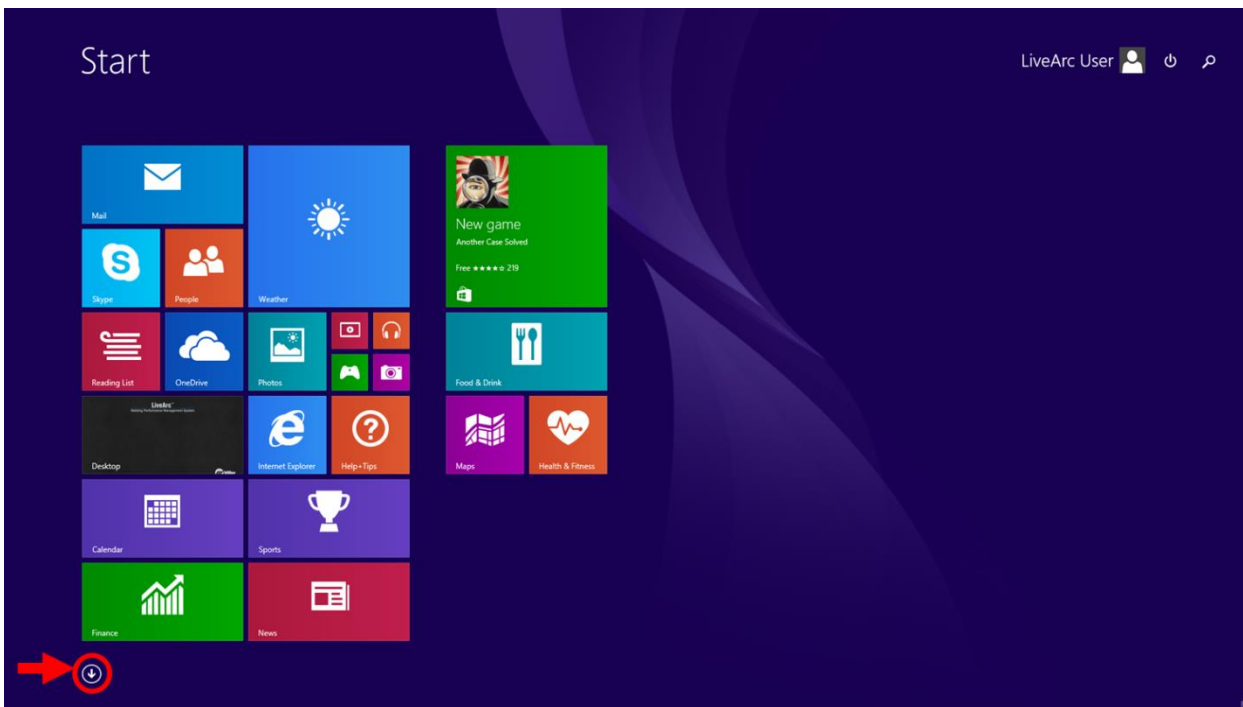




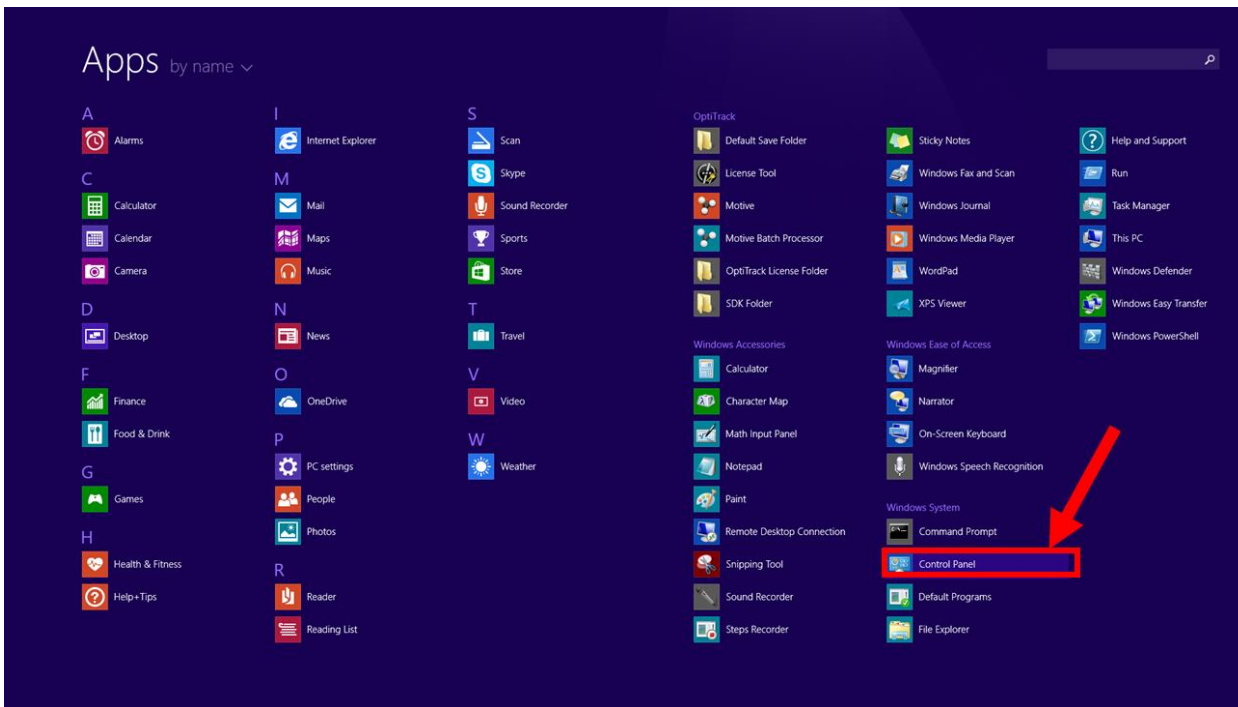
Touch anywhere in the purple background as indicated by the red arrow.



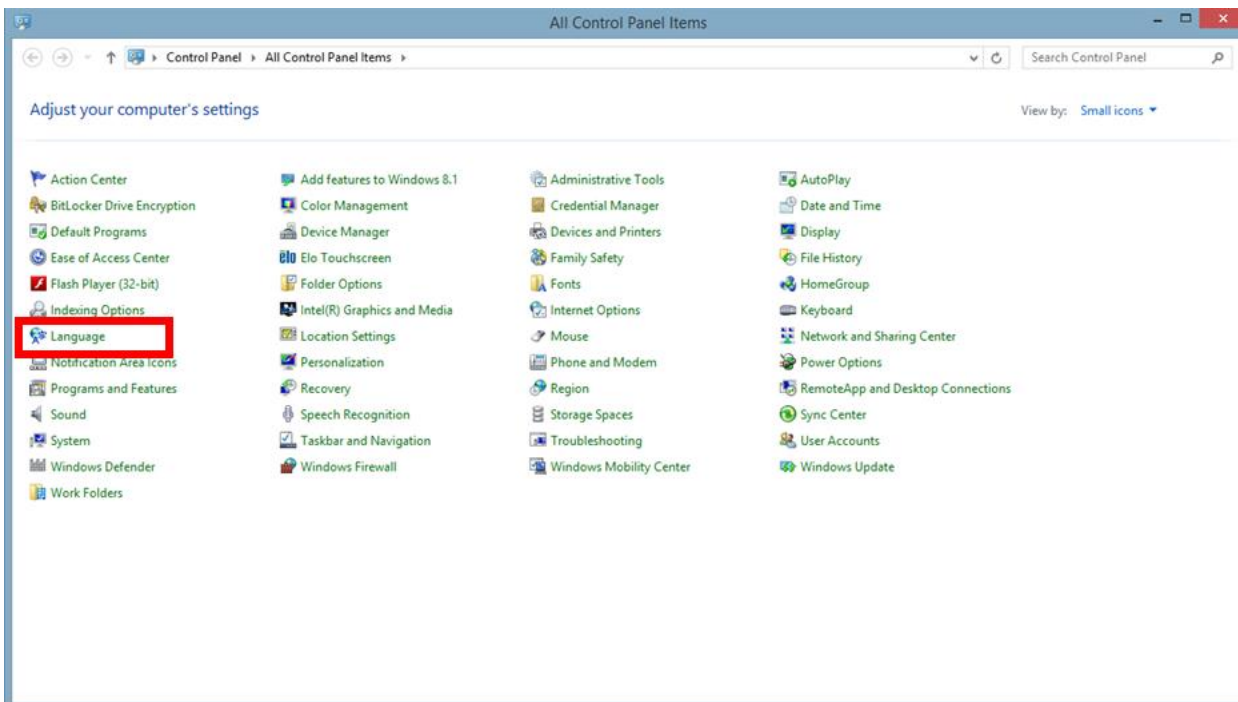
Touch the down arrow.



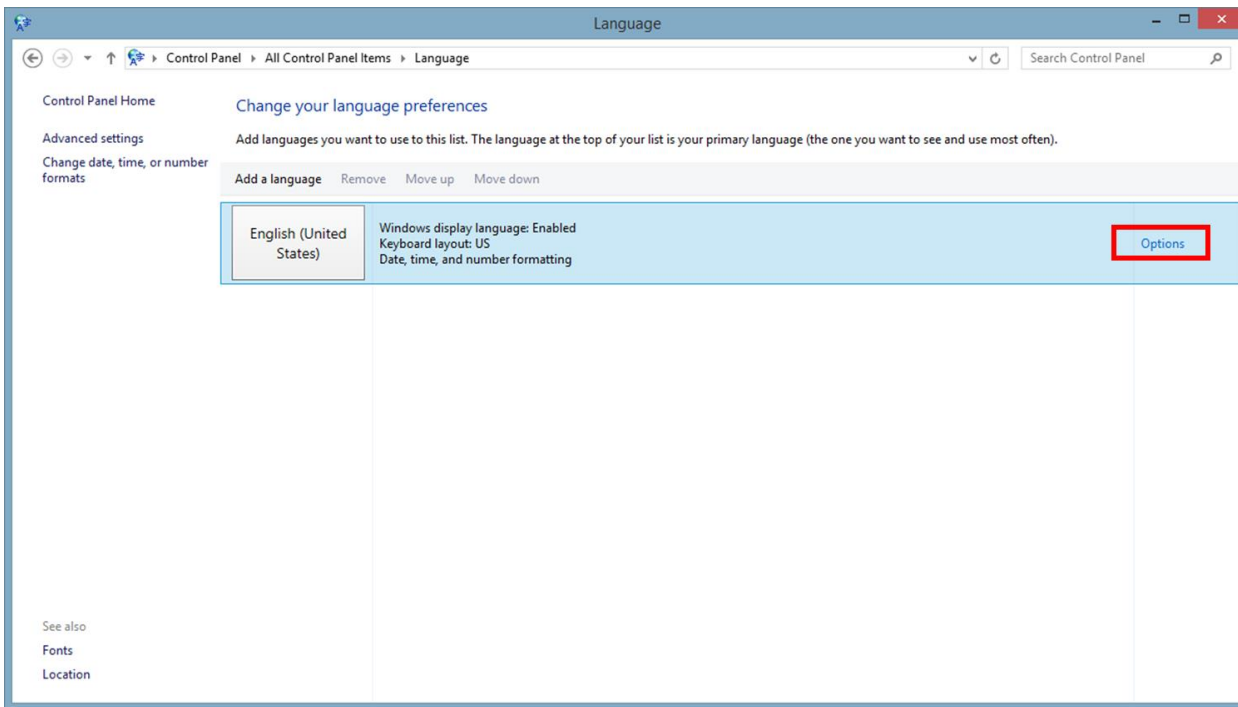
Select the **Control Panel** option.



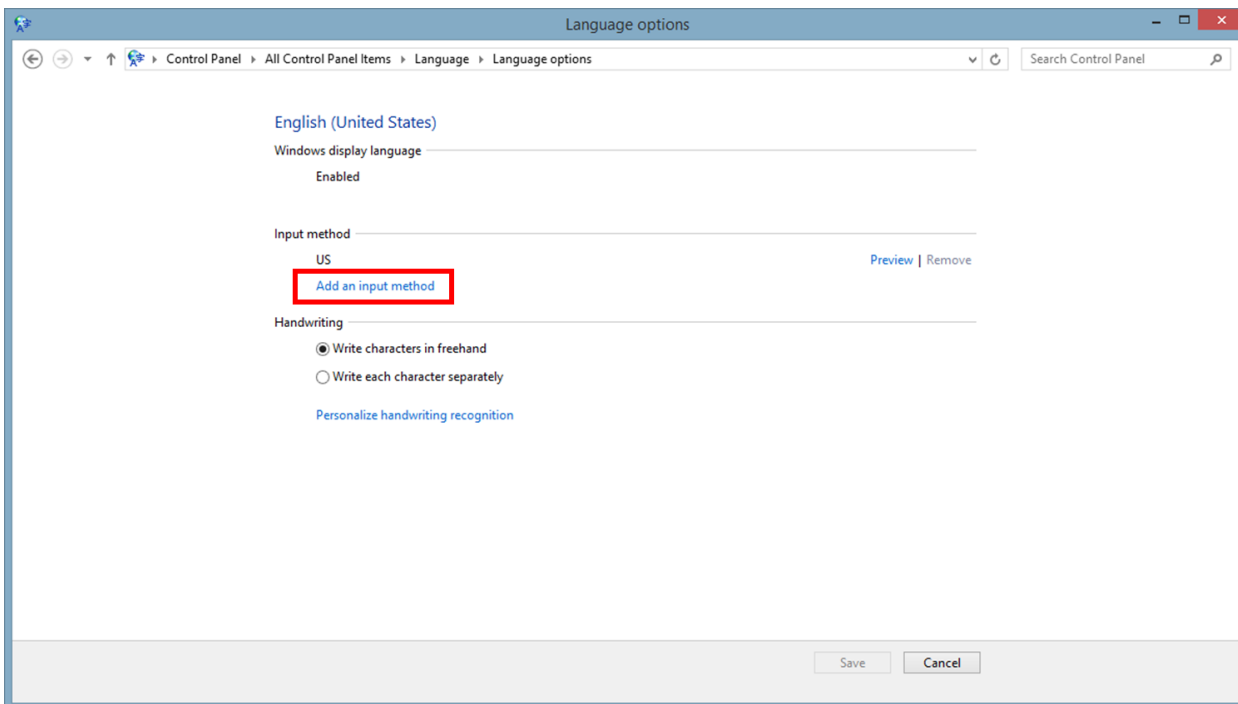
Select **Language**.



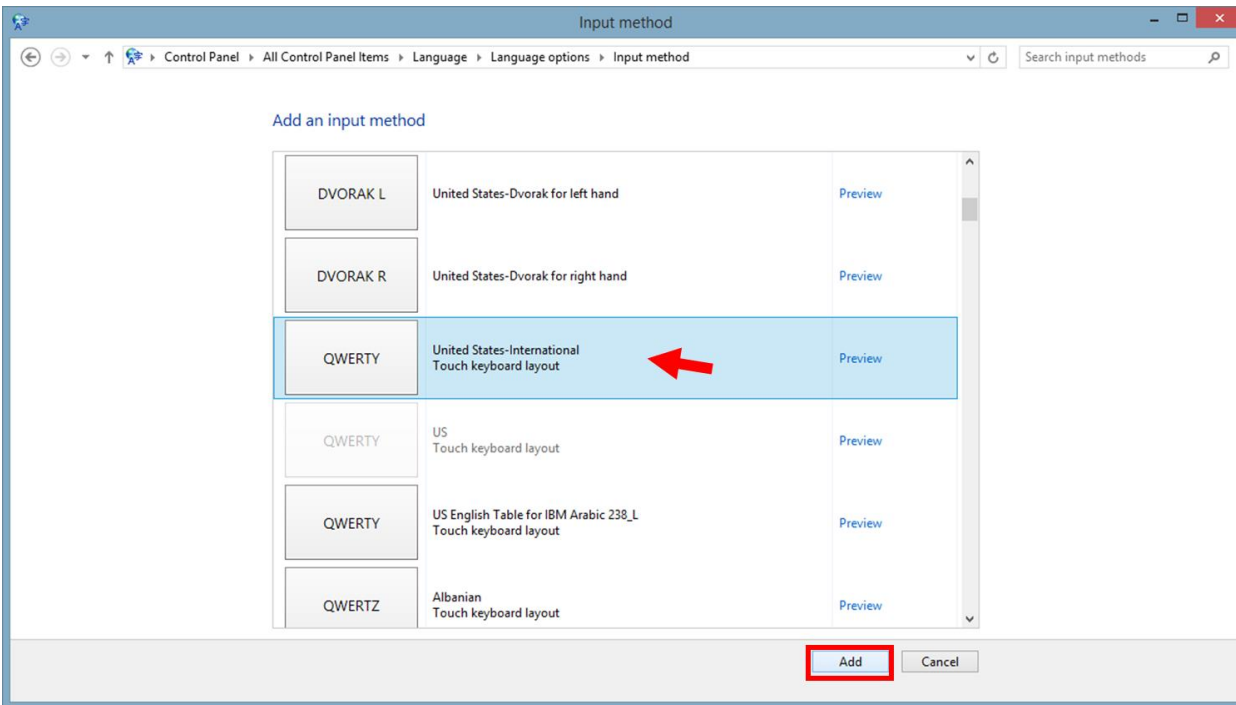
In the *Language* window select **Options**.



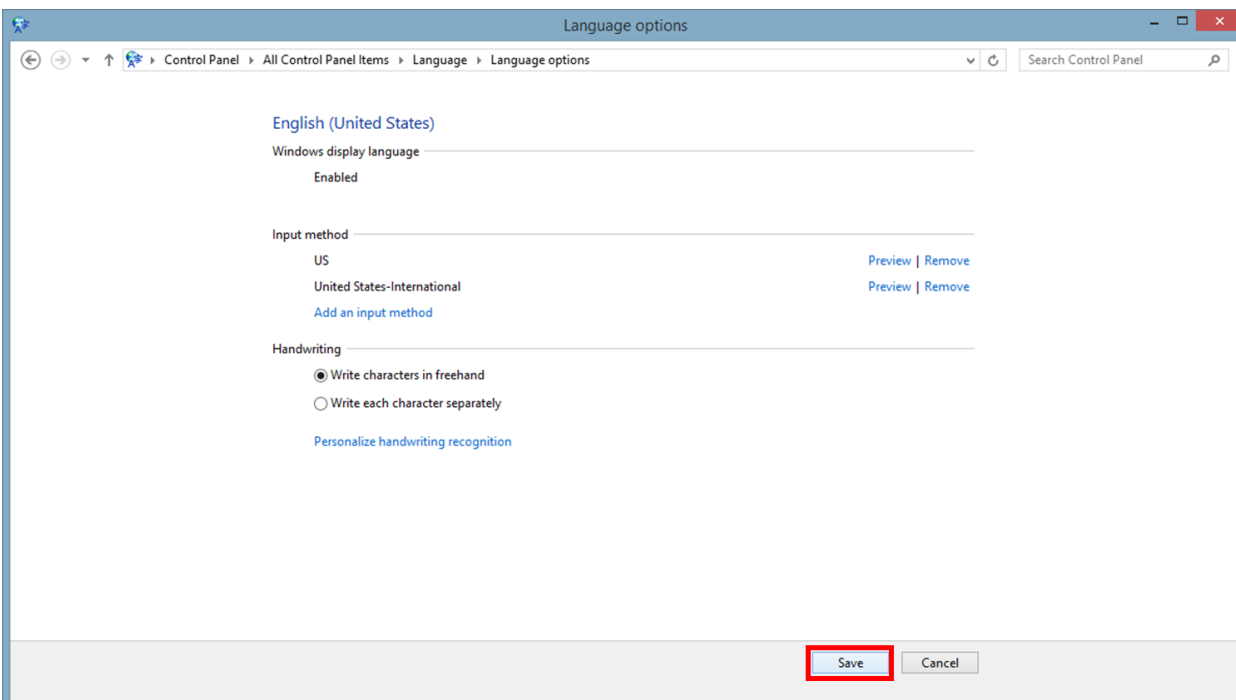
In the *Language Options* window select **Add an input method**.



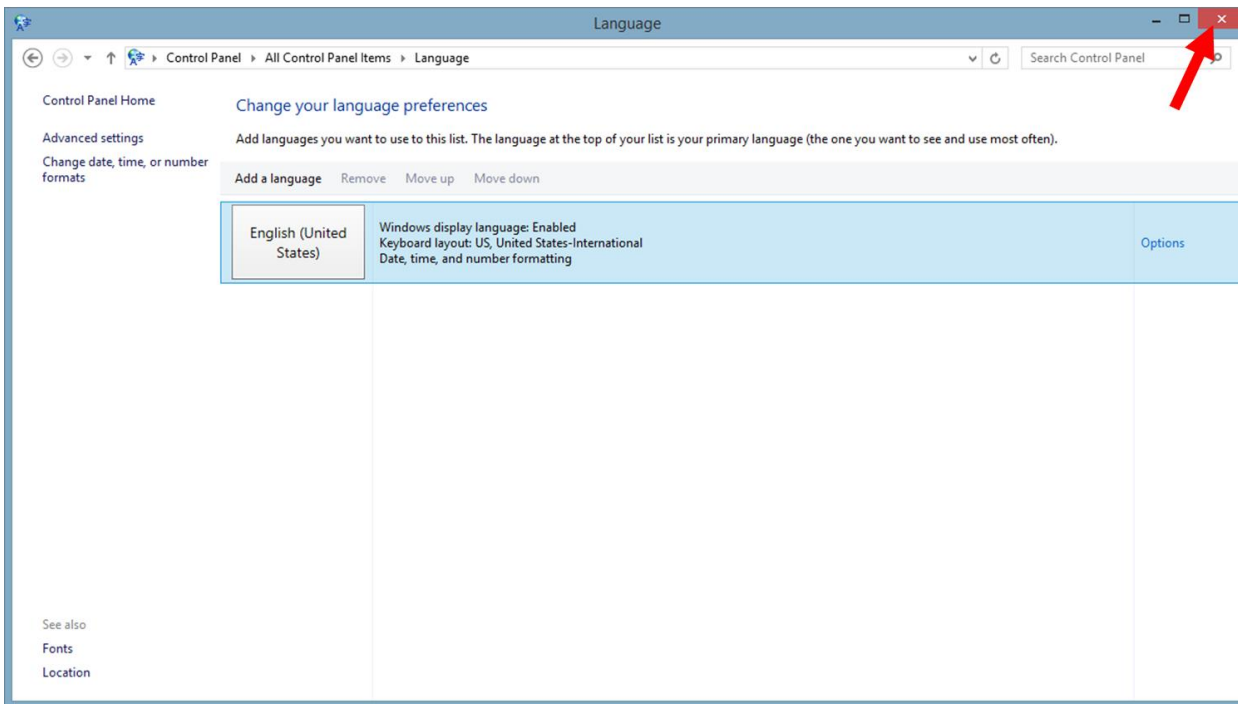
Scroll down to the **United States-International Touch keyboard layout**. Select it and then press **Add**.  
In most cases, this layout should be the 9<sup>th</sup> option in the list.



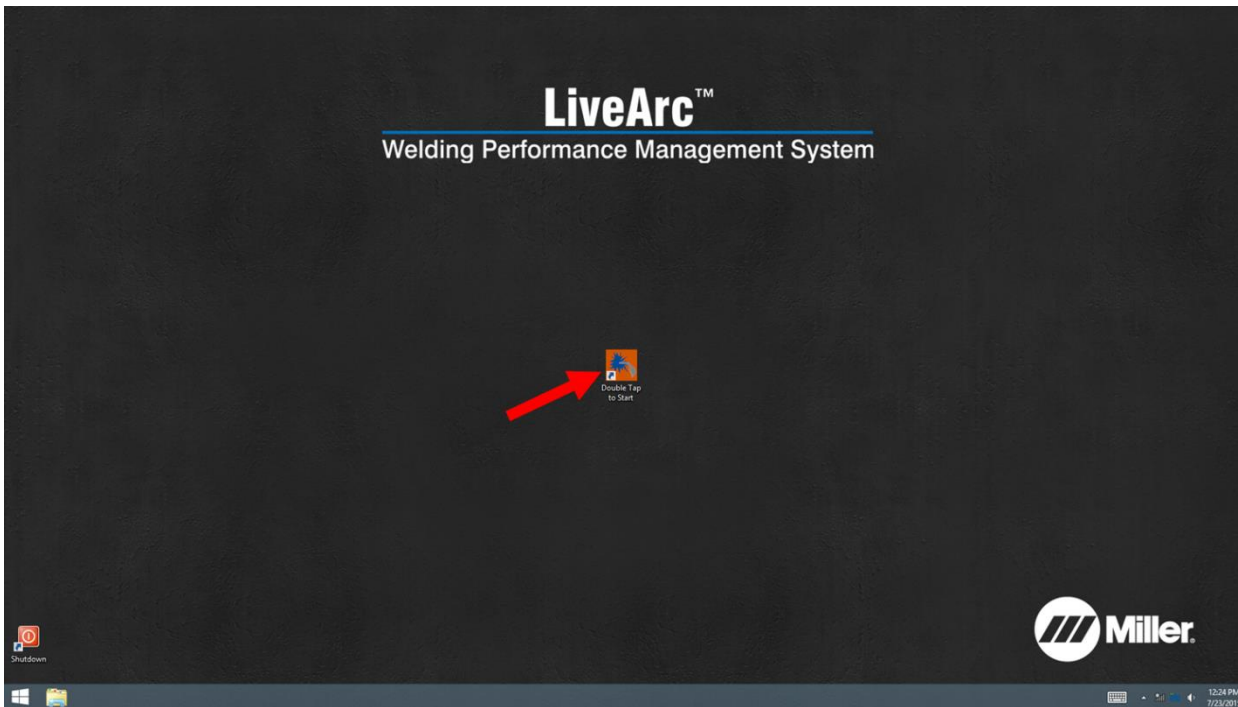
Now back on the *Language Options* window, select **Save**.



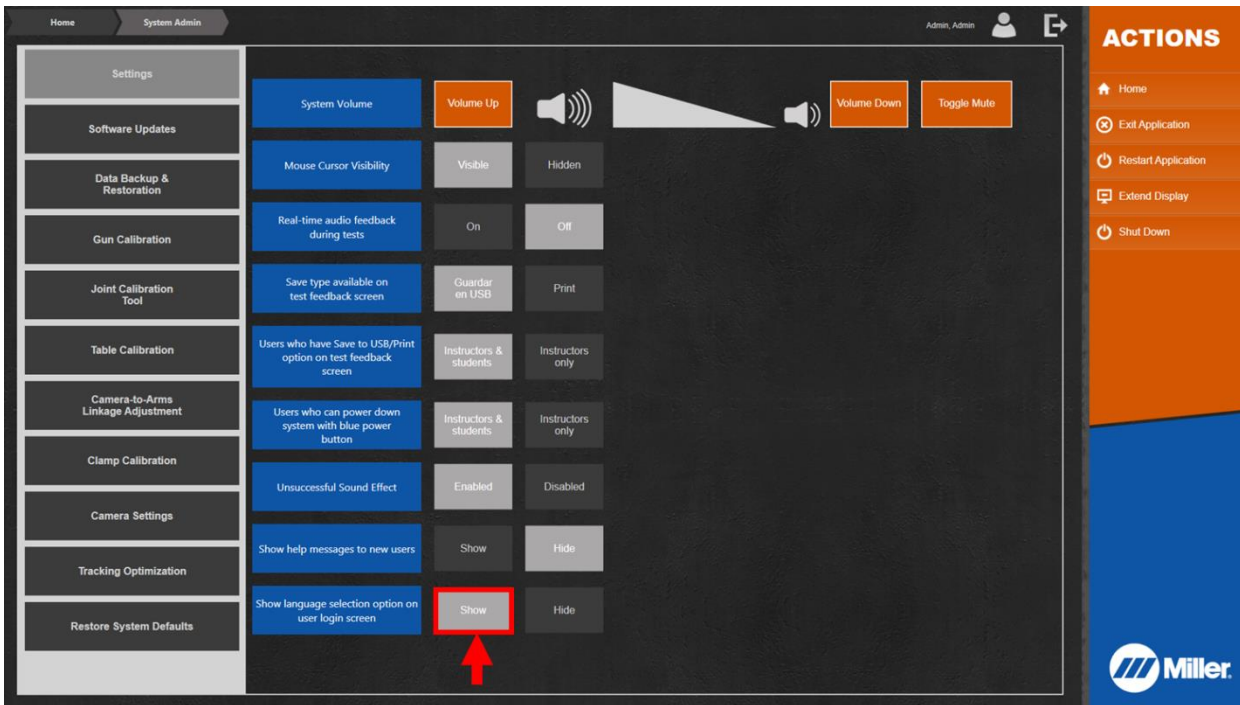
Exit the *Language* window.



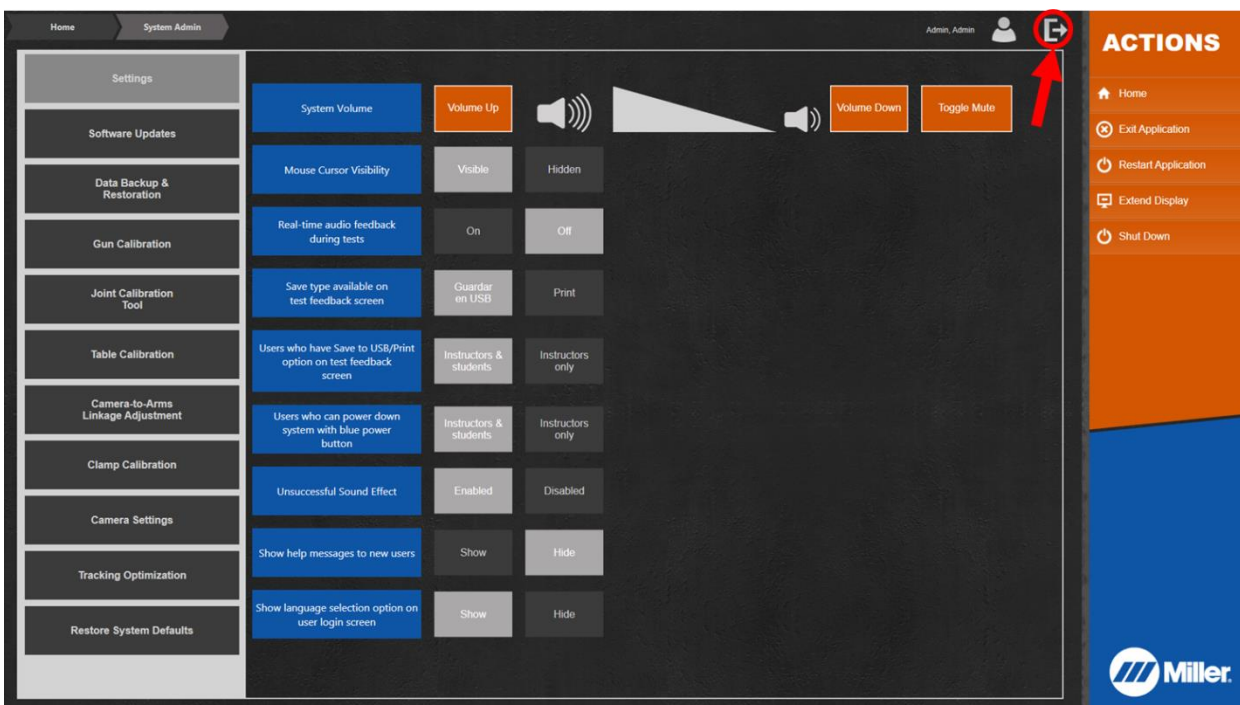
Double tap the LiveArc icon to start the LiveArc software.



After logging in as an instructor, go to System Admin, Settings. On the setting “Show language selection option on user login screen”, select **Show**.



Select the Logout icon. Then select **Ok** to confirm.



Language selection options will now be available on the user login screen.

