



THE LEGEND REDEFINED



NEXT-GENERATION BOBCAT™ 265

It has all the dependability that made the Bobcat machine a legend, plus more capabilities to take on more jobs — and faster, easier setup too.



It can take on more more jobs while delivering the uncompromised performance you need.



Speeds setup and makes it less complicated.



Delivers uncompromised stick arc performance with 7018 and 6010 electrodes.



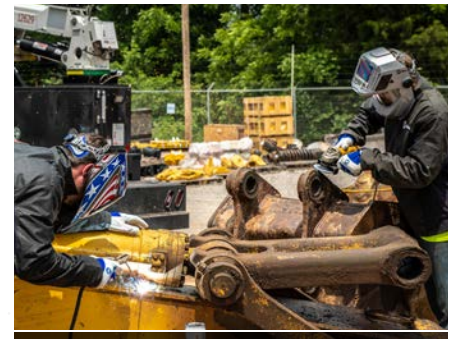
AUTO-SET™ TECHNOLOGY

Makes weld parameter setup fast, easy and accurate for operators of all skill levels.



FULL AUXILIARY POWER

Ensures that you'll always have the auxiliary power you need for jobsite tools at any weld setting.



NO POWER SPIKES

Jobsite tools can run without interruption, helping you get more done.



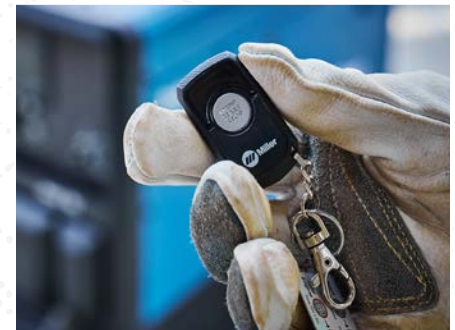
LIGHTER AND SMALLER

Over 100 pounds lighter and 13% smaller than previous models, it's easier to move and takes up less space on trucks.



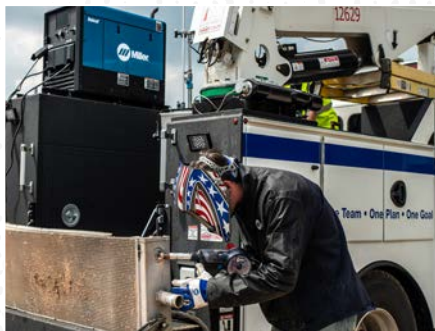
MORE DATA VISIBILITY

- Predictive maintenance information helps you plan necessary service time.
- Productivity screens make it easier for you to monitor machine use.



REMOTE START/STOP

Easily shut off the engine to reduce idling time — get lower fuel costs and less jobsite noise.



DIRECT SPOOL GUN CONNECTION

Makes it easy to weld aluminum, expanding the types of jobs you can take on.



OPTIONAL BATTERY CHARGE/CRANK ASSIST

Ensures that you have reliable DC output when you need it, without carrying a separate charger.



OPTIONAL ARCREACH® TECHNOLOGY

Make parameter changes at the weld joint, eliminating walks to the machine. Increase arc-on time, improve your bottom line and ensure a safer jobsite.

MAKE YOUR WORK LEGENDARY WITH THE NEXT-GENERATION BOBCAT™ 265: VISIT [MILLERWELDS.COM/LEGENDS >>>>>](https://www.millerwelds.com/legends)

