

**KEEP THIS SAFETY CARD CLOSE TO THE OPTX™ SYSTEM AT ALL TIMES
SAFETY CARD MUST BE IN THE OPERATOR'S FIELD OF VISION AT ALL TIMES**



OptX™ SAFETY INFORMATION



QUESTIONS?



1-866-931-9730
PWSService@millerwelds.com
MillerWelds.com/optxinfo



Read and follow all labels and the Owner's Manual carefully before installing, operating, or servicing unit. Read the safety information at the beginning of the manual and in each section.

WEAR LASER SAFETY EYEWEAR



Everyone present during laser operation must wear both Miller OptX laser welding helmet and laser safety eyewear certified for OD 7 or greater at 1070 nm.

WEAR OPTX LASER WELDING HELMET



Wear the supplied Miller OptX laser welding helmet to protect eyes and head. Hot flying particles, intense light, UV radiation and vagrant laser radiation can occur during material processing. Always wear the OptX laser welding helmet in combination with the appropriate laser safety eyewear.

WEAR PROTECTIVE CLOTHING



Wear laser- and heat-resistant protective clothing.



WEAR PROTECTIVE GLOVES



Wear laser- and heat-resistant protective gloves.

LASER SAFETY PRECAUTIONS



DANGER



CLASS 4 LASER PRODUCT INVISIBLE LASER RADIATION

Avoid eye or skin exposure to direct or scattered radiation IEC 60825-1:2014
Please refer to the product labeling on the rear panel



WARNING



Operate only in a laser controlled area with safety interlocks.



Wear appropriate personal protective equipment in the laser controlled area.



Never look into the OptX torch or point it at others, even when wearing full eye protection

SEE OTHER SIDE FOR INFORMATION ON OPERATION

**KEEP THIS SAFETY CARD CLOSE TO THE OPTX™ SYSTEM AT ALL TIMES
SAFETY CARD MUST BE IN THE OPERATOR'S FIELD OF VISION AT ALL TIMES**

SAFE OPERATION REQUIRES

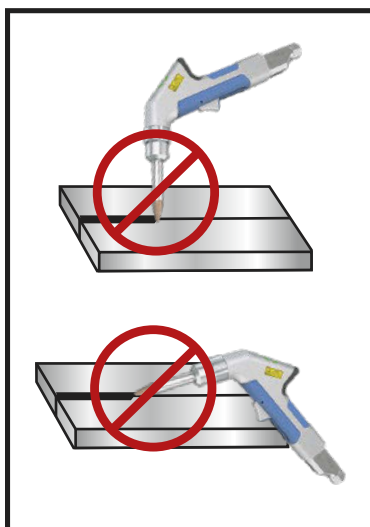
- 1 PROPER MODE SELECTION BASED ON MATERIAL AND THICKNESS**
- 2 PROPER NOZZLE SELECTION BASED ON JOINT GEOMETRY**
- 3 PROPER POSITIONING OF THE OPTX TORCH (WELDING HEAD)**

WELDING AND CLEANING NOZZLE SELECTION


	Butt Joint	Corner Joint	Tee Joint	Lap Joint	Edge Joint
Welding					
Cleaning					

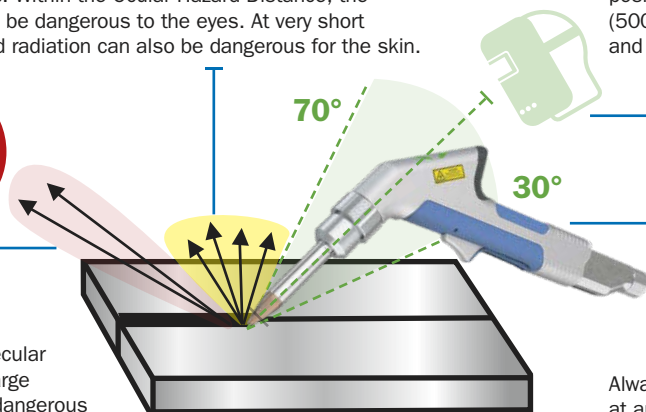
OPTX TORCH ANGLE AND POSITION

The operator must be aware of reflections at all times. Increased occurrence of reflections is possible when laser parameters are incorrectly set to melt the target material.



Lower power density radiation scattered from the process zone can travel certain distances. Within the Ocular Hazard Distance, the scattered radiation can be dangerous to the eyes. At very short distances the scattered radiation can also be dangerous for the skin.

 High power density specular reflections can travel large distances and can be dangerous for the eyes and skin.



Always maintain viewing position at least 20 inches (500 mm) from the weld seam and behind reflection zones.

Always hold the OptX torch at an angle between 30 and 70 degrees.

SEE OTHER SIDE FOR SAFETY INFORMATION