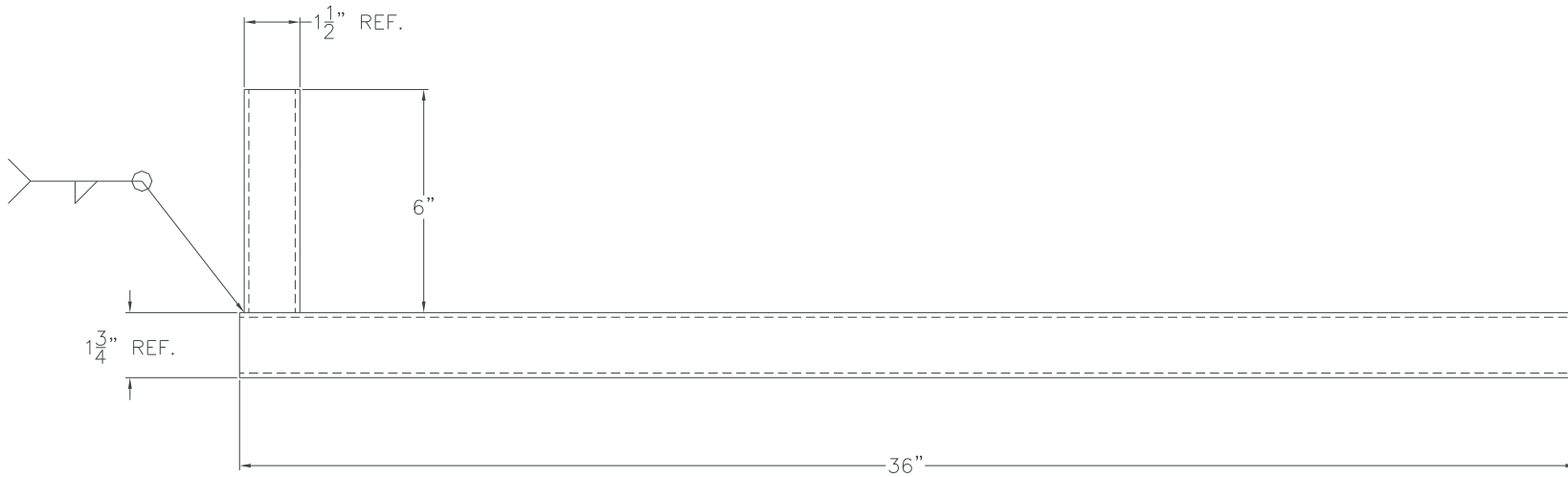


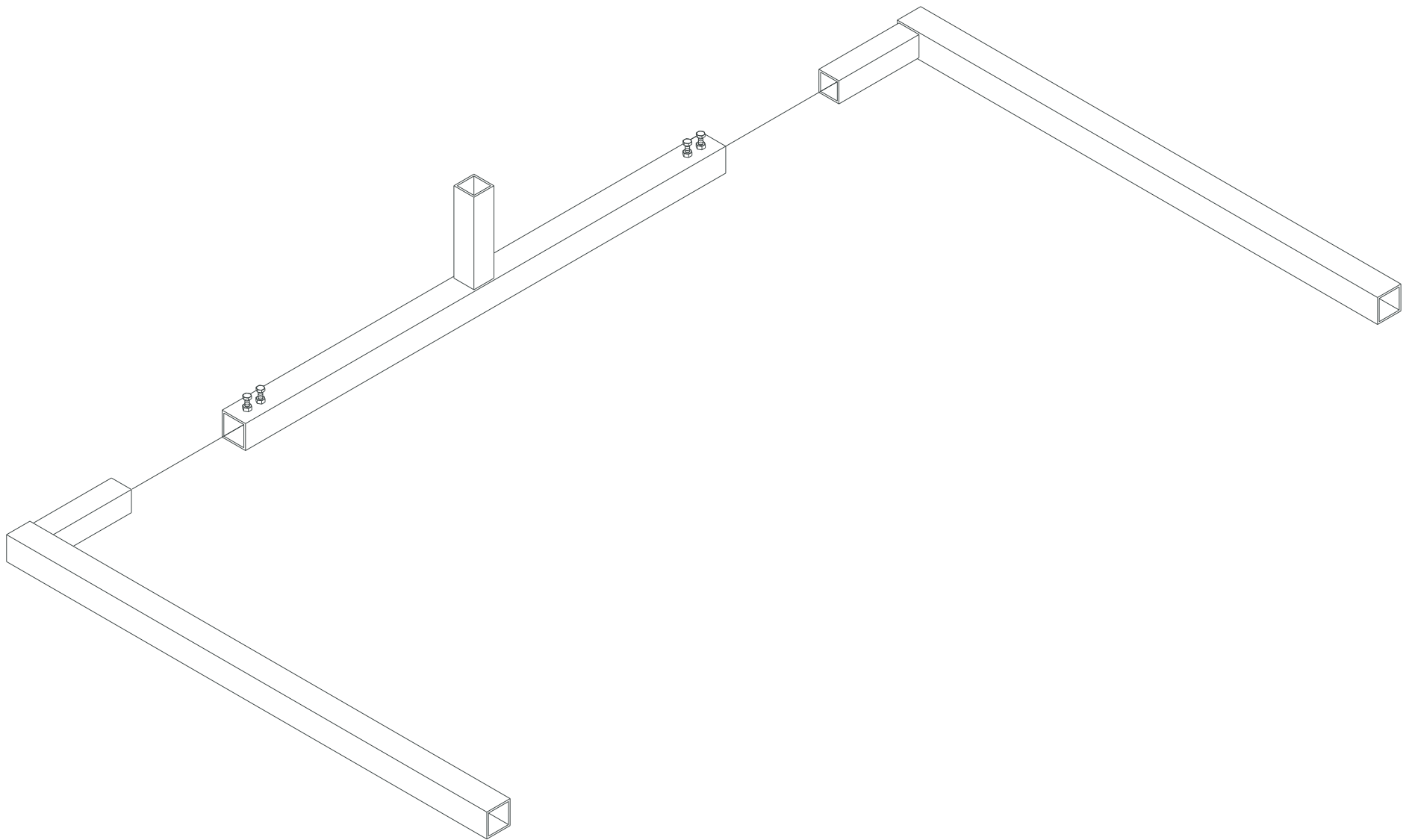
Building the Base: On one piece of 36"-1 3/4" tubing, drill two 5/16" holes in each end, spaced 1" apart, weld in 5/16" nuts. On the same side as the holes, weld 1 1/2" sq. tubing to the center of the tube.

BASE SUPPORT



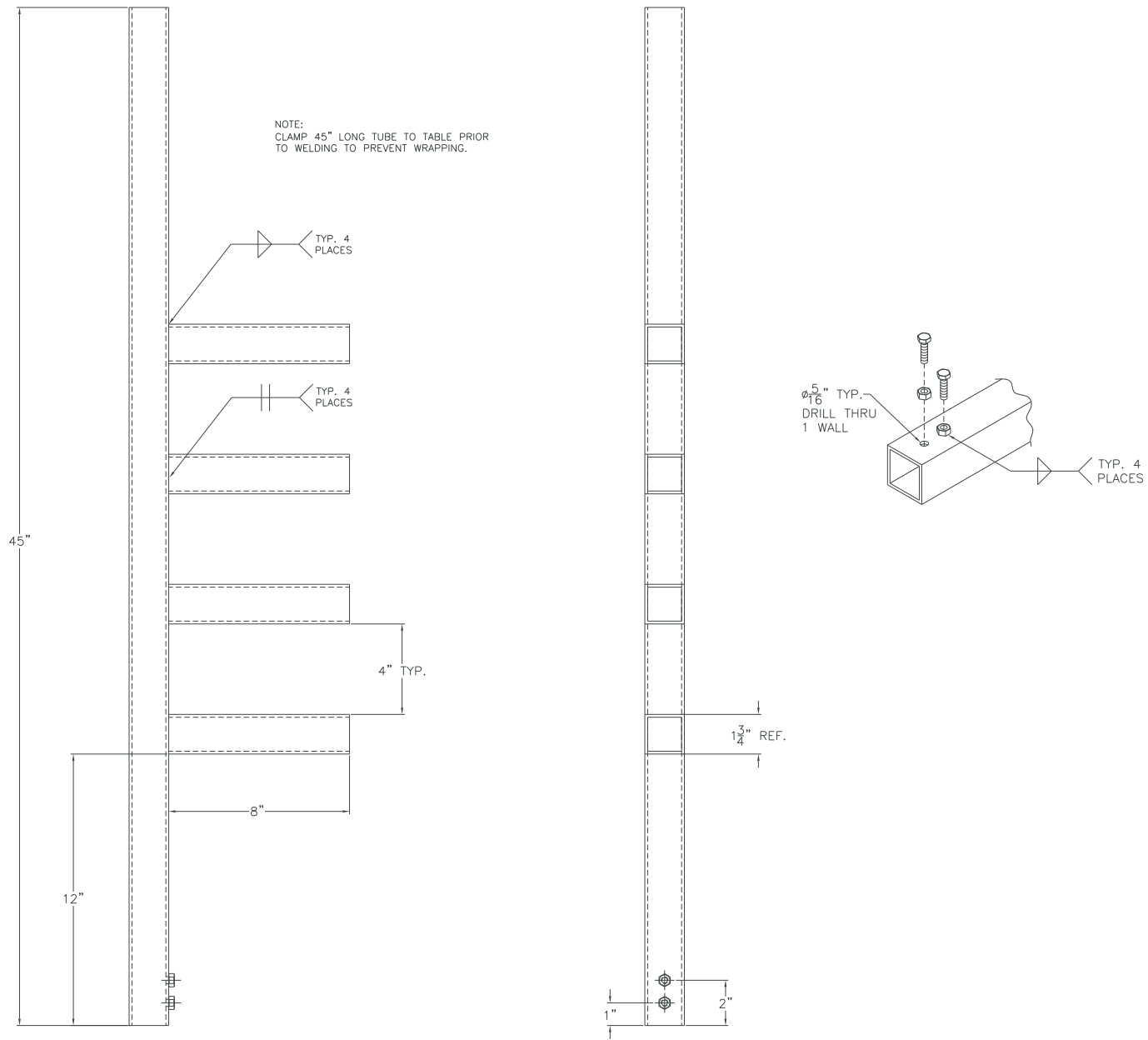
2. Weld the remaining two pieces of the 1 1/2" sq. tubing to the ends of the 2 pc. of 1 3/4" sq. tubing.

BASE LEG

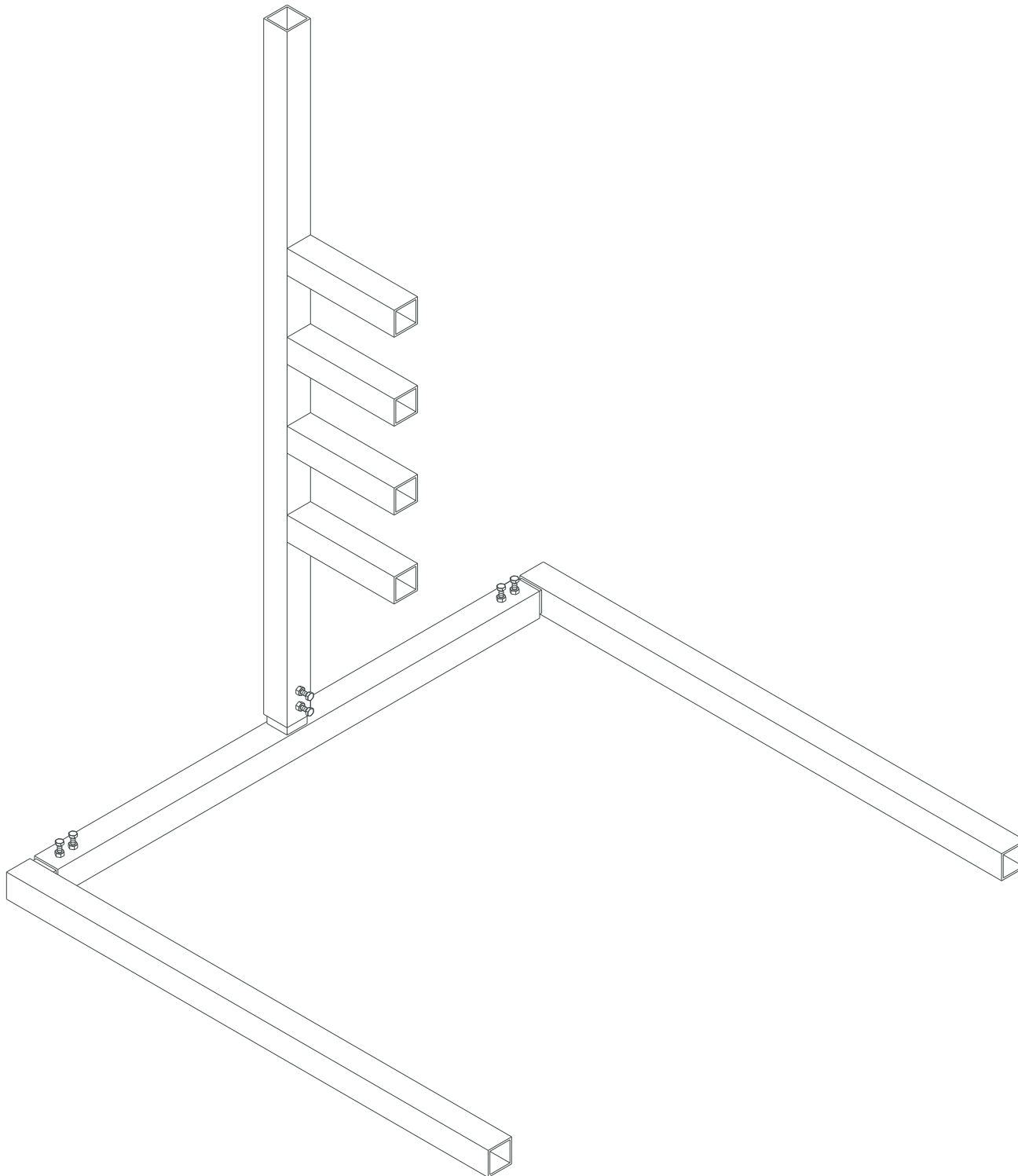


3. Piece together completed sides to finish the base.

COMPLETED BASE

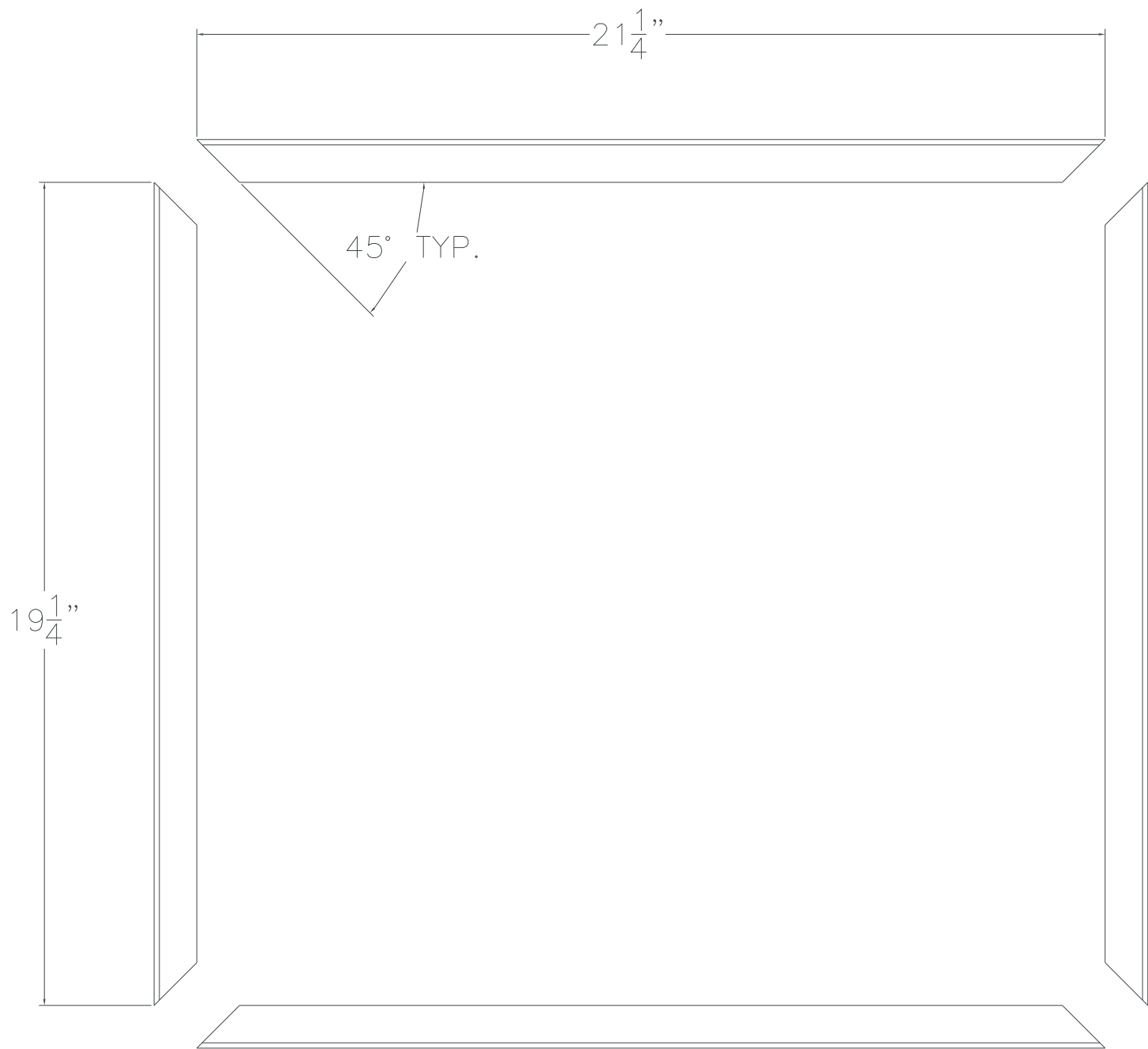


4. Building the Upright Frame:
Drill two 5/16" holes in one end
of the 1 3/4" x 45" tubing. Weld
the 5/16" nuts into holes. Clamp
45" piece to bench to prevent
warping when welding.
Measuring 12" up from the
bottom, weld each 8" x 1 3/4" sq.
tubing to base, spacing 4" apart.



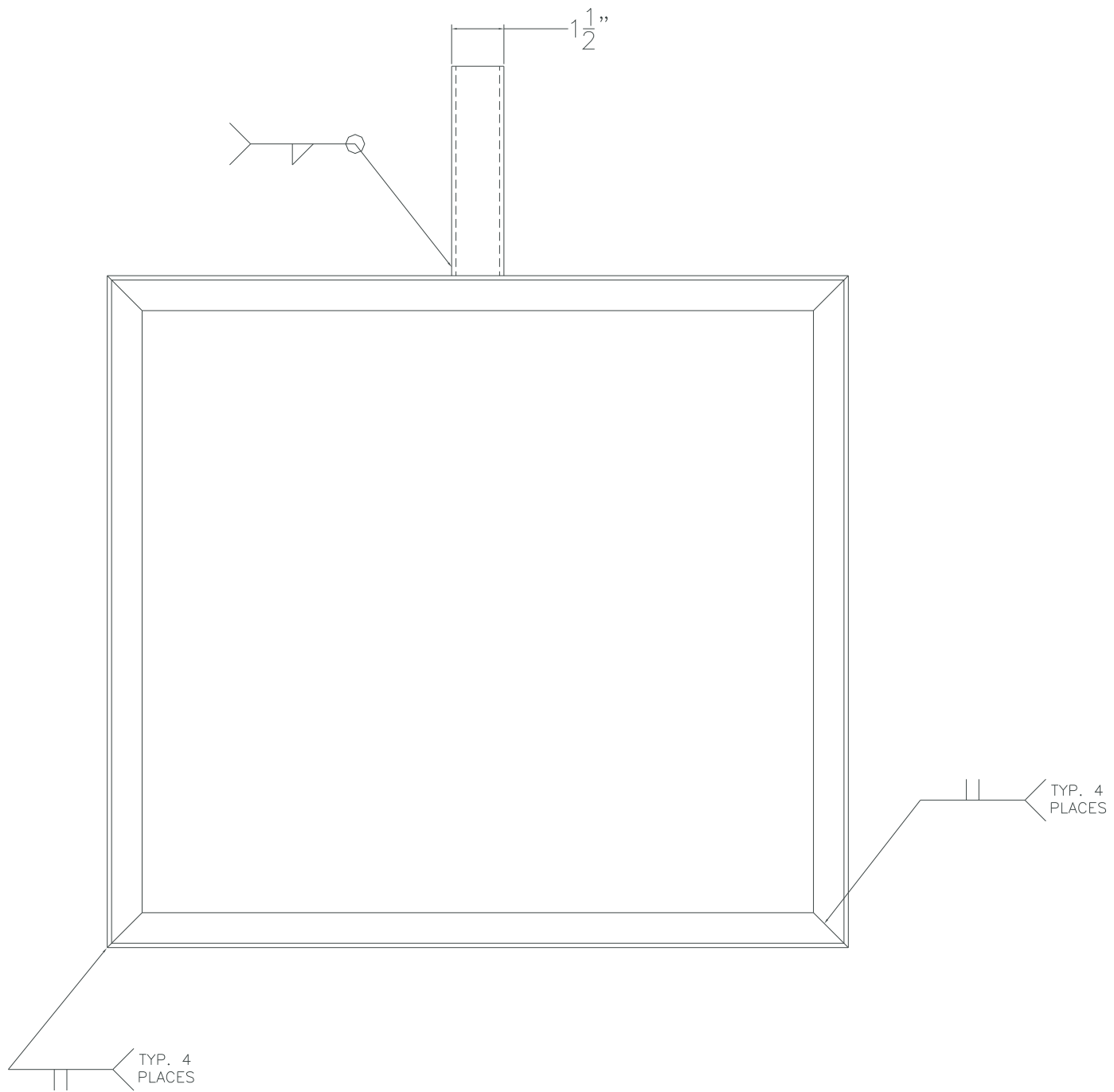
5. Assemble to the base and firmly snug all bolts.

BASE & UPRIGHT ASSEMBLY



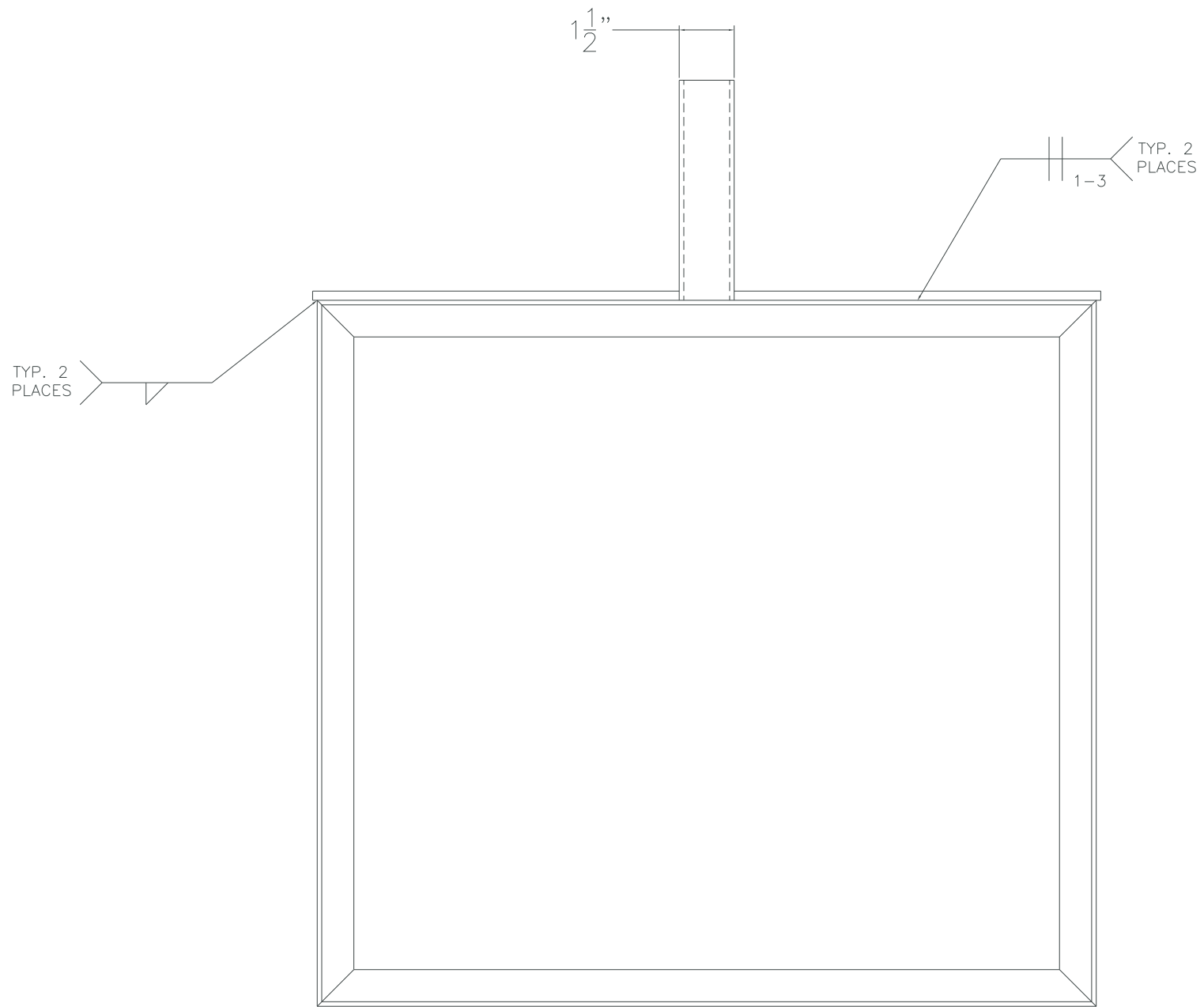
6. Building the Grill Grate Frame:
Saw corners of angles to 45°

SAW CORNERS OF ANGLES TO 45°



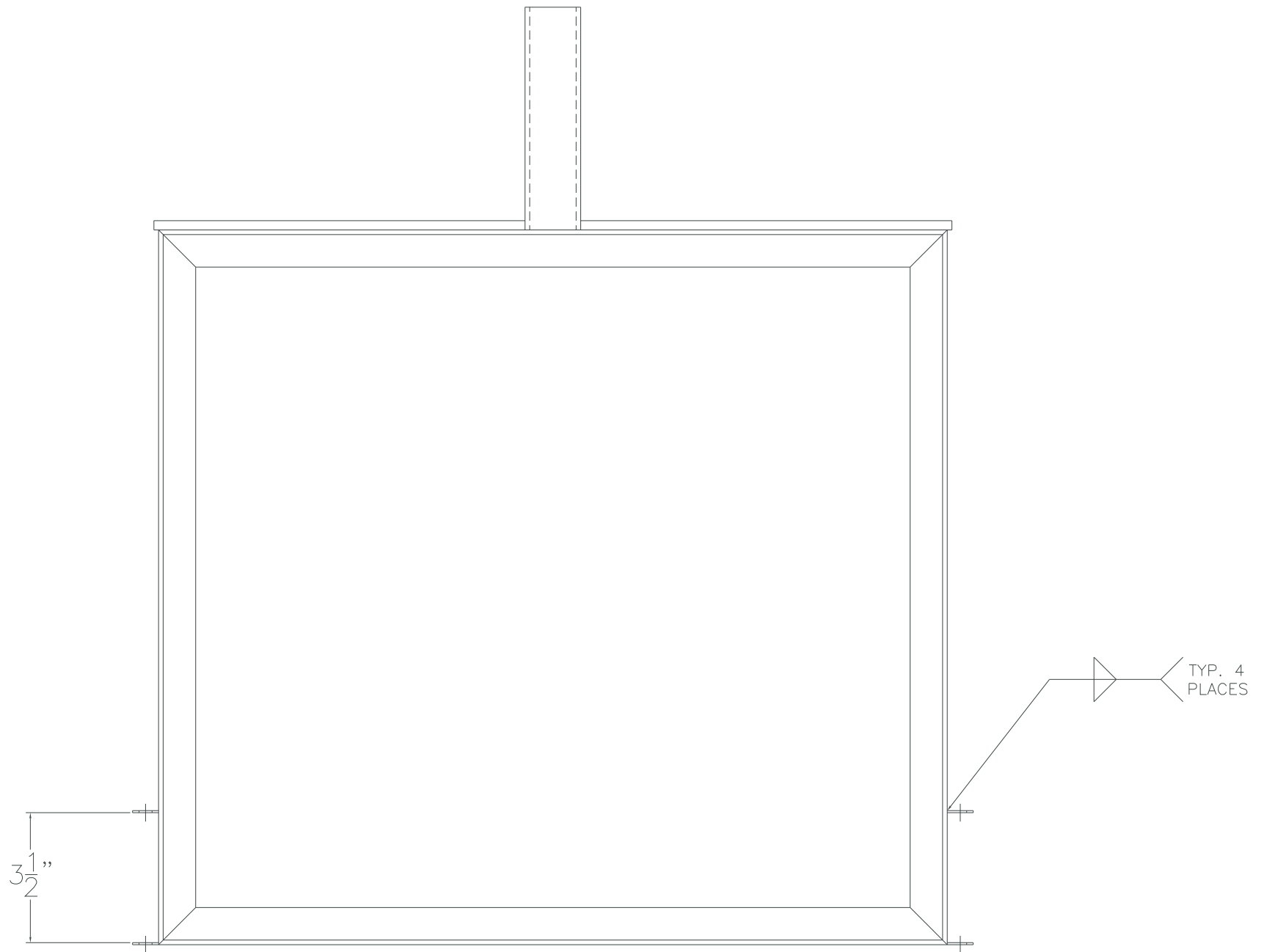
7. Weld square frame together.
 Weld $1\frac{1}{2}$ " sq. to the center of the
 $21\frac{1}{4}$ " side.

WELD SQUARE FRAME



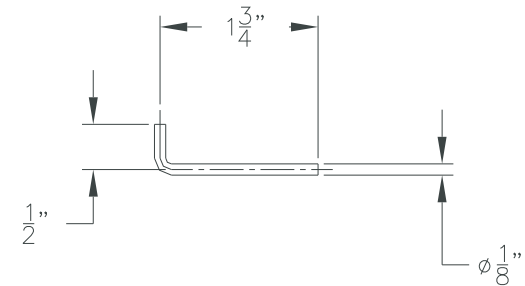
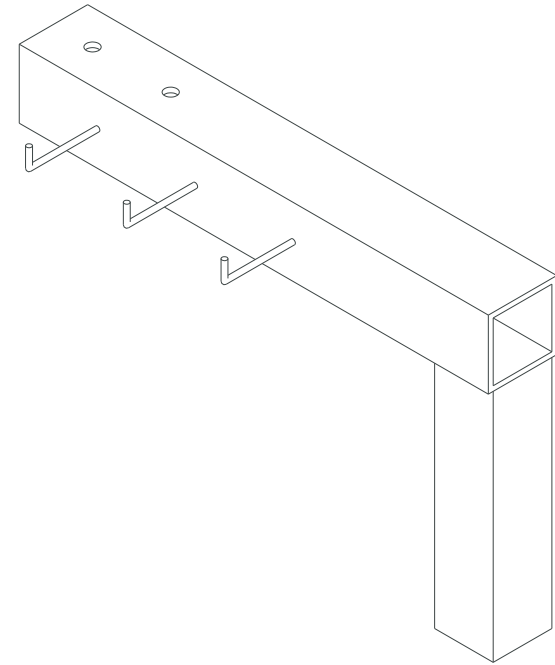
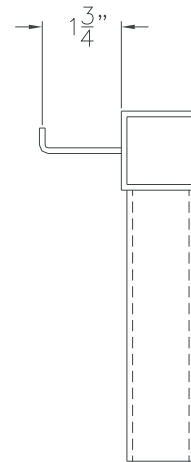
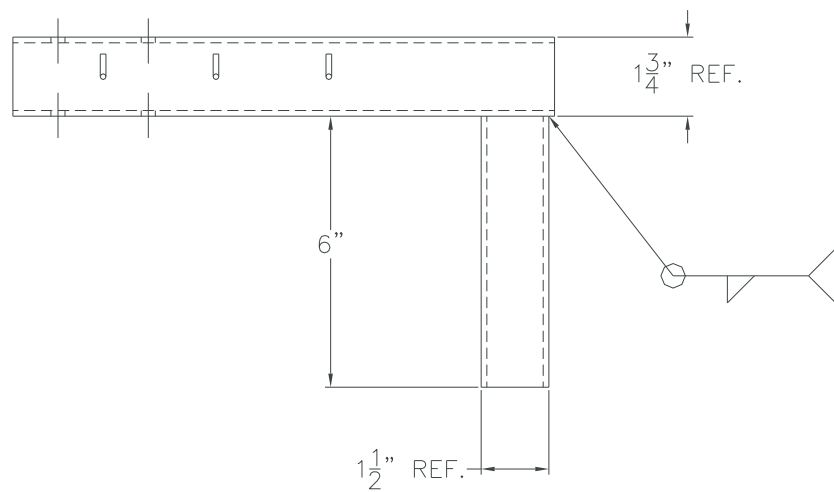
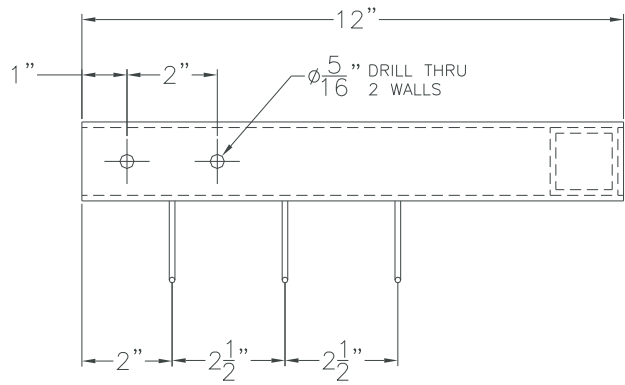
8. Weld $\frac{1}{4}$ " x 1 flat on to the angle along sides of $1\frac{1}{2}$ " sq for strength.

WELD FLAT TO FRAME



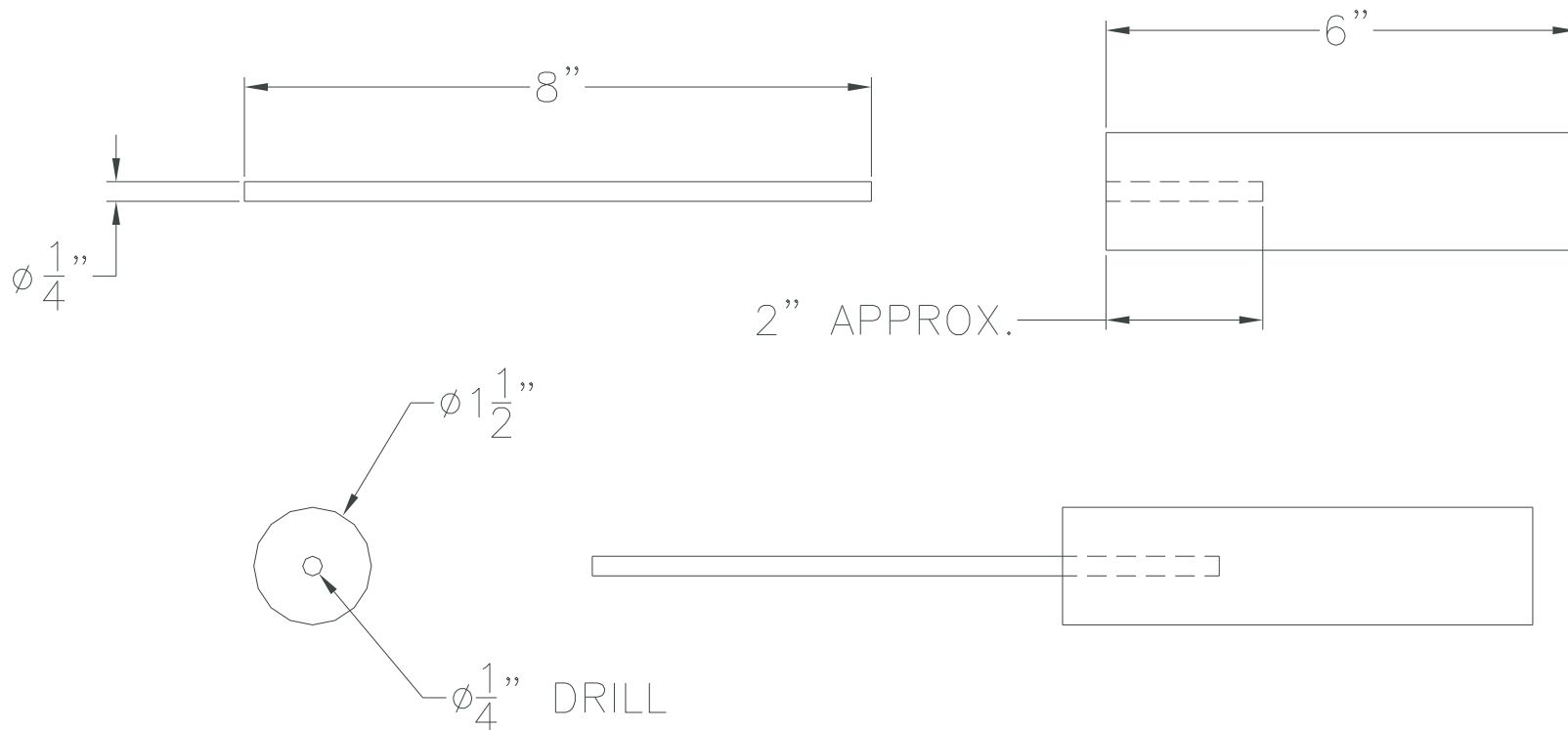
9. Weld on two $\frac{5}{16}$ " washers to each side $3\frac{1}{2}$ " apart to attach the handles.

WELD WASHERS TO FRAME



10. Building the Accessory Holder: Drill two 5/16" holes in the 1 3/4" sq. tubing 2" apart for the handles. Weld 1 1/2" sq. to opposite ends of holes. Weld 3 pc. of 1/8" rod to the side for cooking utensils.

ACCESSORY HOLDER



11. Building the Grill Grate

Handles: Drill $\frac{1}{4}$ " hole in center of each dowel end. Pound rods into place to create handles.

GRILL GRATE HANDLES