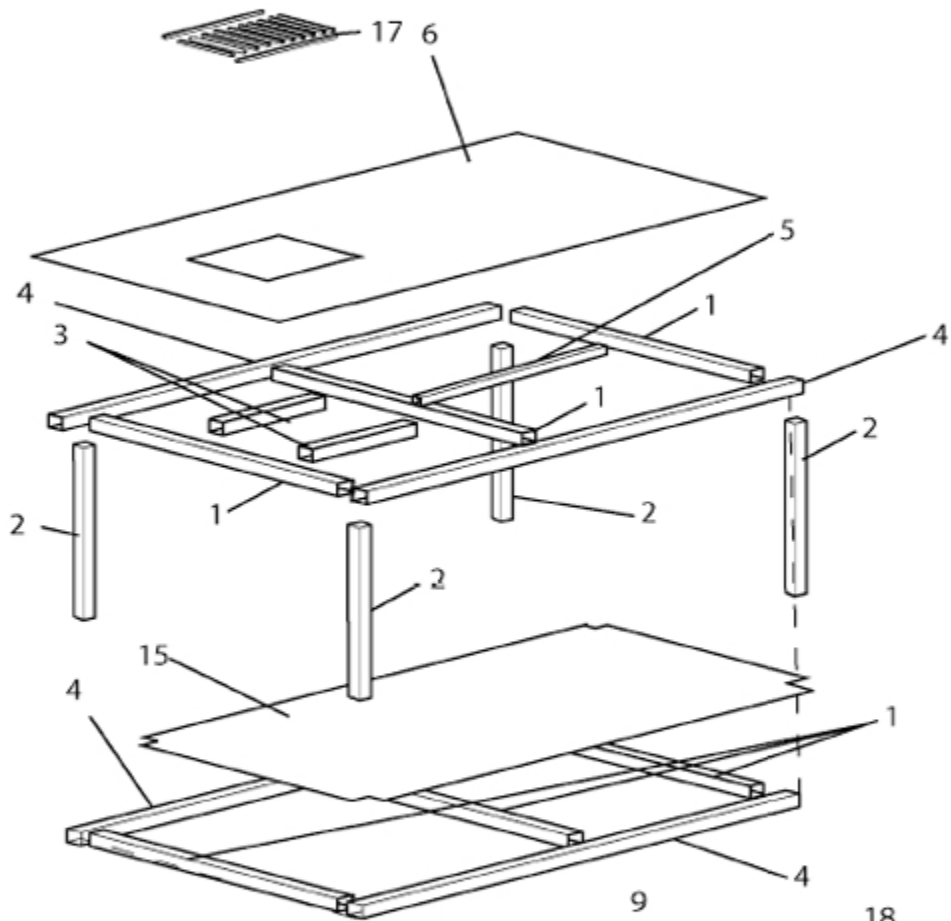
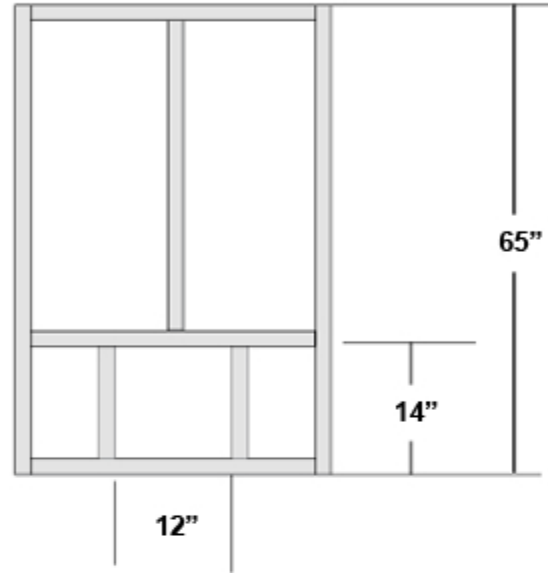
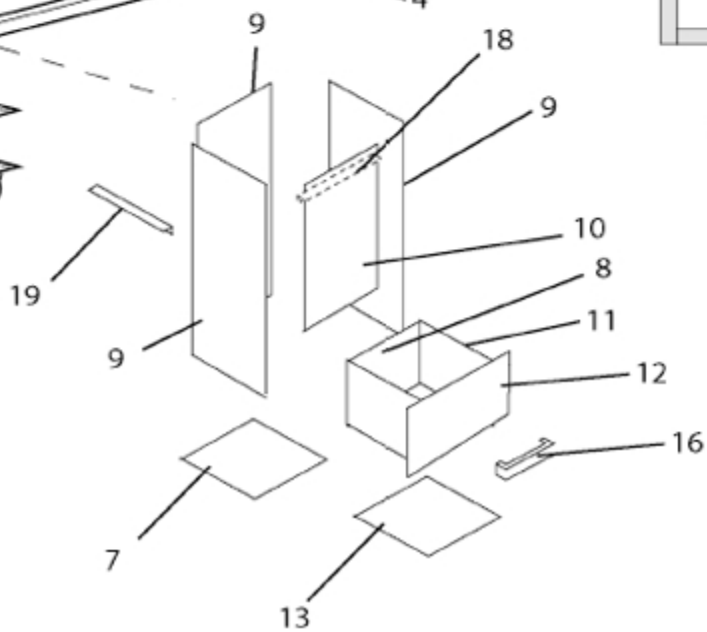
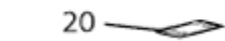


TOP FRAME



BOTTOM FRAME



## Welding Table Parts List

<u>Key</u>	<u>QTY</u>	<u>Description</u>
1	6	37" x 2 x 2 x 1/8" pieces of square tubing
2	4	27" x 2 x 2 x 1/8" pieces of square tubing
3	2	12" x 2 x 2 x 1/8" pieces of square tubing
4	4	65" x 2 x 2 x 1/8" pieces of square tubing
5	1	47" x 2 x 2 x 1/8" pieces of square tubing
6	1	4' X 6' X 3/8" top plate.
7	1	12 1/2" X 12 1/2" 16 ga.
8	1	7" X 12" 16 ga.
9	3	12 1/2" X 26 3/4" 16 ga.
10	1	12 1/2" X 19 1/4" 16 ga.
11	2	7" X 12 1/4" 16 ga.
12	1	8 1/4" X 12 1/2" 16 ga.
13	1	12" X 12 1/4" 16 ga.
14	16	3/8" x 1/2" bolts for wheels
15	1	Sheet 41" x 65" x 1/8"
16	1	1" x 1/4" x 7 1/2" flat bar stock (drawer handle)
17	1	1" x 1/4" x 10' flat bar stock to make plasma grate
18	2	3/4" x 3/4" x 12" angle iron for plasma grate support
19	4	3/4" x 3/4" x 12 1/2" angle iron for holding plasma chute in place
20	4	4" x 4 1/2" x 1/4" plate for mounting wheels
21	2	Stationary wheels rated at 1000# each.
	2	Swivel wheels rated at 1000# each with locks

2" diameter pipe about 3"

1/4" round bar stock for tool holders, torch holders etc.