



TM-240 046H

2012-10

Processes



MIG (GMAW) Welding

Flux Cored (FCAW) Welding

Description

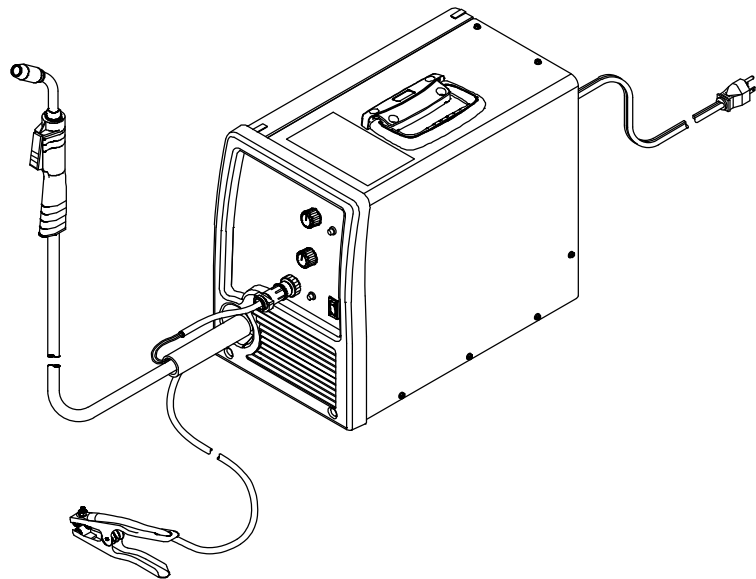


Arc Welding Power Source And Wire Feeder

Millermatic 211[®] Auto-Set[™] w/MVP

Eff w/LJ330001N And Following

For OM-239 988 Revision A And Following



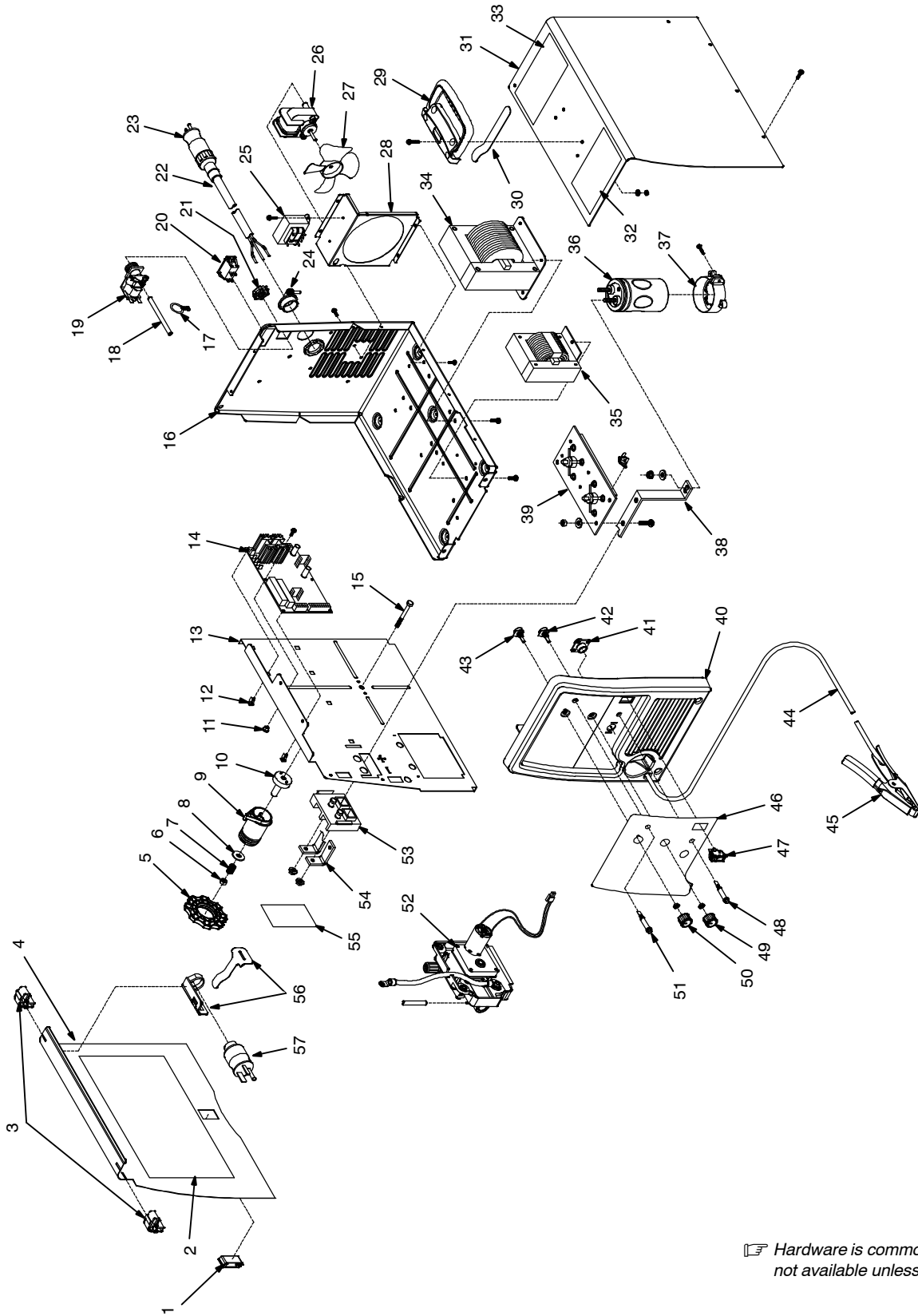
Visit our website at
www.MillerWelds.com


PARTS LIST

File: MIG (GMAW)



SECTION 1 - PARTS LIST



 Hardware is common and not available unless listed.

805 391-B

Figure 1-1. Main Assembly

Item No.	Dia. Mkgs.	Part No.	Description	Quantity
Figure 1-1. Main Assembly				
1		204 711	LATCH, slide flush snap lock	1
2		239 992	LABEL, parameter/consumable/polarity	1
3		202 412	HINGE, door	2
4		202 584	DOOR, access	1
5		211 887	NUT, hub	1
6		204 608	NUT	1
7		225 257	SPRING, cprsn	1
8		203 072	WASHER, flat	1
9		211 339	HUB, spool	1
10		202 726	ADAPTER, spool hub	1
11		228 165	GROMMET, SCR no.8	1
12		134 201	STAND-OFF support PC board	5
13		236 660	BAFFLE, center	1
14	PC1	239 461	CIRCUIT CARD ASSY, control (Prior to LK330815N)	1
14	PC1	244 612	CIRCUIT CARD ASSY, control (Eff w/LK330815N)	1
15		203 071	SCREW	1
16		237 636	BASE	1
17		197 198	CABLE TIE	2
18		196 467	TUBING, pvc	1
19	GS1	232 516	VALVE, 1 way	1
20	CB1	219 552	SUPPLEMENTARY PROTECTOR, man reset 2P 20A 250 V AC	1
		201 553	CLIP, retaining circuit breaker	1
21		220 805	NUT, 750-14 NPS 1.48hex .41h nyl	1
22		+239 588	CABLE, power 7ft 12GA 4C	1
		232 368	LABEL, warning electric shock/do not modify pwr cord	1
23		219 261	ADAPTER, power cable 5-15P (115V/15A)	1
23		◆219 259	ADAPTER, power cable 5-20P (115V/20A)	1
23		219 258	ADAPTER, power cable 6-50P (230V/50A)	1
24		604 102	CONN, clamp cable 1.000	1
25	T2	240 180	XFMR, control 56VA 24VCT 2.4A 115/230 PRI 50/60Hz (Prior to LK330815N)	1
26	FM	240 846	MOTOR, fan (Prior to LK330815N)	1
26	FM	236 925	MOTOR, fan 115/230V 50/60HZ 2850 RPM .1818 DIA shaft (Eff w/LK330815N)	1
27		240 847	BLADE, fan (Prior to LK330815N)	1
27		409 953	BLADE, fan (Eff w/ LK330815N)	1
28		239 593	WINDTUNNEL	1
29		208 015	HANDLE, carrying	1
30		221 004	STRAP, retaining hook & loop	1
31		+202 583	WRAPPER, cover	1
32		226 510	LABEL, warning general precautionary	1
33		240 548	LABEL, warning general precautionary (sp)	1
34	T1	239 589	TRANSFORMER	1
	TP1	196 685	THERMOSTAT, NC open 140C, close 100C	1
35	Z1	239 591	STABILIZER, 150A	1

◆OPTIONAL

+When ordering a component originally displaying a precautionary label, the label should also be ordered.

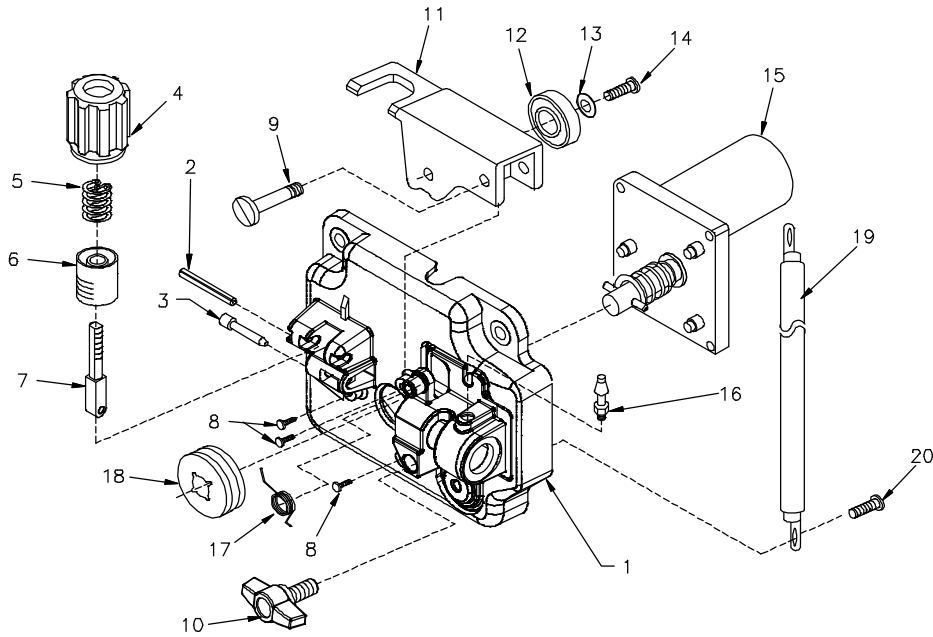
To maintain the factory original performance of your equipment, use only Manufacturer's Suggested Replacement Parts. Model and serial number required when ordering parts from your local distributor.

Item No.	Dia. Mkgs.	Part No.	Description	Quantity
Figure 1-1. Main Assembly (Continued)				
... 36	C1	228 176	.. CAPACITOR, elctlt 100,000 uf	1
... 37		203 491	.. CLAMP, capacitor	1
... 38		204 215	.. BUS BAR (positive)	1
... 39	SR1	260 529	.. KIT, rectifier field replacement	1
	TP2	203 279	.. THERMOSTAT, NC open 210F close 192F (Prior to MA422374N)	1
... 40		239 580	.. PANEL, front	1
... 41	RC1	048 282	.. RCPT W/SKTS (service kit)	1
... 42	R1	202 663	.. POTENTIOMETER, cp flat 1T .50W 50k (voltage control)	1
... 43	R2	207 415	.. POTENTIOMETER, cp flat 1T .50W 50k (wire speed control)	1
		229 955	.. CABLE, work 11 ft w/clamp (including)	1
... 44		196 619	.. WORK CABLE	1
... 45		240 697	.. CLAMP, work	1
... 46		239 991	.. LABEL, nameplate	1
... 47	S1	196 575	.. SWITCH, rocker SPST	1
... 48	LED1	230 033	.. LED, yellow	1
... 49		207 078	.. KNOB, pointer	2
... 50		228 230	.. KNOB, pointer w/detent	2
		229 929	.. BALL PLUNGER, push fit	1
... 51	LED2	228 223	.. LED, blue	1
... 52	DM	Fig. 1-2	.. WIRE FEED DRIVE ASSY	1
... 53		193 144	.. INSULATOR, output stud	1
... 54		193 194	.. BUS BAR (negative)	1
... 55		231 985	.. LABEL, warning electric shock	1
... 56		203 844	.. HOLDER, power cord adapter w/strap	1
... 57		219 258	.. ADAPTER, power cable 6-50P (230V/50A)	1
		221 037	.. REGULATOR/FLOWMETER, 10-50 CFH ARGON/CO ₂	1
		183 581	.. HOSE, gas 5ft	1
		◆212 492	.. REGULATOR/FLOWMETER, 0-50 CFH CO ₂	1
		◆144 108	.. HOSE, gas 5ft (for use with regulator/flowmeter 212 492)	1

◆OPTIONAL

+When ordering a component originally displaying a precautionary label, the label should also be ordered.

To maintain the factory original performance of your equipment, use only Manufacturer's Suggested Replacement Parts. Model and serial number required when ordering parts from your local distributor.



804 095-A

Figure 1-2. Wire Feed Drive Assembly

Item No.	Dia. Mkgs.	Part No.	Description	Quantity
223 655 Figure 1-2. Wire Feed Drive Assembly				
...		1	HOUSING, plastic drive motor	1
...		2	PIN, spring	1
...		3	GUIDE, wire inlet	1
...		4	KNOB, tension	1
...		5	SPRING, compression	1
...		6	CUP, spring tension	1
...		7	FASTENER, pinned	1
...		8	SCREW, motor	3
...		9	SCREW,shld	1
...		10	KNOB, tee	1
...		11	LEVER, pressure	1
...		12	BEARING, ball	1
...		13	WASHER, flat	1
...		14	SCREW, 010-32 x 0.62	1
...	DM	15	MOTOR, gear	1
...		16	FITTING, gas	1
...		17	SPRING, torsion	1
...		18	ROLL, feed .024, .030/.035	1
...		19	CABLE	1
...		20	SCREW, 250-20 x 0.62	1
...		225 717	DRIVE HEAD ASSY, w/o motor	1

+When ordering a component originally displaying a precautionary label, the label should also be ordered.

To maintain the factory original performance of your equipment, use only Manufacturer's Suggested Replacement Parts. Model and serial number required when ordering parts from your local distributor.

Miller Electric Mfg. Co.

An Illinois Tool Works Company
1635 West Spencer Street
Appleton, WI 54914 USA

International Headquarters—USA

USA Phone: 920-735-4505 Auto-Attended
USA & Canada FAX: 920-735-4134
International FAX: 920-735-4125

For International Locations Visit
www.MillerWelds.com

